



CONCEPT NOTE PROPOSAL FOR SINGLE COUNTRY

PART I: PROJECT/PROGRAMME INFORMATION

Title of Project/Programme: *Locally Led Adaptation to strengthen the climate resilience of vulnerable communities in Benin's Coastal Lagoons Inter-Municipal Community*

Country: Benin

Thematic Focal Area: Agriculture / Water resource / Ecosystem services

Type of Implementing Entity: National Implementing Entity

Implementing Entity: Fonds National pour l'Environnement et le Climat (FNEC)

Executing Entities: *Coastal Lagoons Inter-Municipal Community (CCLC)*

Amount of Financing Requested: 4,995,602 (in U.S Dollars Equivalent)

Project Formulation Grant Request (available to NIEs only): Yes No

Amount of Requested financing for PFG: 91,800 (in U.S Dollars Equivalent)

Letter of Endorsement (LOE) signed: Yes No

NOTE: LOEs should be signed by the Designated Authority (DA). The signatory DA must be on file with the Adaptation Fund. To find the DA currently on file check this page: <https://www.adaptation-fund.org/apply-funding/designated-authorities>

Stage of Submission:

- This concept has been submitted before
- This is the first submission ever of the concept proposal

In case of a resubmission, please indicate the last submission date:

Please note that concept note documents should not exceed 50 pages, including annexes.

Table of Contents

PART I: PROJECT/PROGRAMME INFORMATION	1
<i>Table of Contents</i>	2
<i>List of tables</i>	3
<i>List of figures</i>	3
<i>Abbreviations and acronyms</i>	4
A – Project/Programme Background and Context:	4
1 – Project context	4
1.1 –Geographical, socio-economic and climatic profile of Benin	5
1.2 – Selection of municipalities for project intervention	9
2 – Geographic, socio-economic and climatic profile of the project’s intervention areas	9
2.1 – Geographic, socio-economic and climatic profile of the municipalities of the CCLC in the Atlantique department.....	9
2.2– Geographical, socio-economic and climatic profile of the municipalities of the CCLC in the Mono department.....	10
3 – Vulnerability of CCLC municipalities to climate change	10
3.1 Vulnerability of the municipalities of the CCLC in the Atlantic department	12
3.1 – Vulnerability of the municipalities of the CCLC in the Mono department	13
5 – Projet choice	14
B – Project/Programme Objectives:	15
C – Project/Programme Components and Financing:	16
D – Projected Calendar:	17
A – Components of the project	17
PART II: PROJECT / PROGRAMME JUSTIFICATION	17
B – Economic, social, and environmental benefits	22
C – Cost-effectiveness analysis of the project	27
D –Alignment of the project with national or local sustainable development strategies	28
E – National technical standards and environmental and social policy	31
F – Duplication	33
G –Lessons learned, knowledge management, and insights gained	33
H –Stakeholder consultation	34
I –Justification for funding	37
J – Sustainability	38
K –Risks related to environmental and social impacts	39
PART III: IMPLEMENTATION ARRANGEMENTS	41
A – Alignment with the Adaptation Fund Results Framework	41
PART IV: ENDORSEMENT BY GOVERNMENT AND CERTIFICATION BY THE IMPLEMENTING ENTITY ..	42
Appendix 1: Letter of endorsement from the AND	44
Appendix 2: List of participants in stakeholder consultations	45
Appendix 2.1: List of participants in the consultation with potential beneficiaries in Ouidah	45
Appendix 2.2: List of participants in the consultation with potential beneficiaries in Kpomassè	45

Appendix 2.3: List of participants in the consultation with potential beneficiaries in Comè	45
Appendix 2.4: List of participants in the consultation with potential beneficiaries in Grand-Popo	45
Appendix 2.5: List of participants in the consultation with potential beneficiaries in Abomey-Calavi..	45
Appendix 3: Eligibility menu for adaptation subprojects and exclusion list	46
Appendix 3.1: Eligibility menu for adaptation subprojects	46
Appendix 3.2: Exclusion list.....	47

List of tables

Table 1 : Cost of project components	16
Table 2 : Implementation period of the project.....	17
Table 3 : Alignment of the project with national or local sustainable development strategies	28
Table 4 : Main national laws and regulations as well as the Adaptation Fund standards applicable...32	
Table 5 : Distribution of consulted stakeholders.....	35
Table 6 : Identified Environmental and Social Impacts and Risks	40
Table 7: Alignment with the Adaptation Fund Results Framework	41

List of figures

Figure 1 : Geographical location of Benin	6
Figure 2 : Climatic zones of Benin.....	7
Figure 3 : Projections from the regional climate model for annual precipitation (top) and temperature displayed as a 20-year moving average for Benin. <i>The line represents the ensemble mean, while the shaded area indicates the spread between models. The projections are based on the RCP4.5 emission scenario.</i>	8
Figure 4 : Flooded agricultural areas.....	11
Figure 5 : Erosion hydrique des sols	12
Figure 6 : Variability and projected trends in precipitation across the seasonal cycle for the Atlantic department.....	13
Figure 7 : Projected deviation from the natural variability of mean surface air temperature with trends for the Atlantic department	13
Figure 8 : Variability and projected trends of rainfall across the seasonal cycle for the Mono department.....	14
Figure 9 : Projected deviation from the natural variability of mean air surface temperature with trends for the Mono department.....	14
Figure 10 : Environmental projects within the CCLC	15

Abbreviations and acronyms

ANPC	:	National Civil Protection Agency
ATDA	:	Territorial Agency for Agricultural Development
CCLC	:	Coastal Lagoons Inter-Municipal Community
CND	:	Nationally Determined Contributions
DGEC	:	Directorate General for the Environment and Climate
DGEFC	:	Directorate General for Water, Forests and Hunting
EDA	:	Enhanced Direct Access Mechanism
FA	:	Adaptation Fund
FNEC	:	National Fund for the Environment and Climate
FONCAT	:	National Disaster Response Fund
GCF	:	Green Climate Fund
GUPS	:	Single Window for Social Protection
MAEP	:	Ministry of Agriculture, Livestock and Fisheries
NC	:	Concept Note
SDG	:	Sustainable Development Goals
NGO	:	Non-Governmental Organization
PCC	:	Municipal Contingency Plan
PCRRC	:	Municipal Platform for Disaster Risk Reduction
PNA	:	National Disaster Risk Reduction Plan Adaptation
PNRRC – ACC	:	National Platform for Disaster Risk Reduction and Adaptation to Climate Change
PRCC-CCLC	:	Climate Change Resilience Project for Vulnerable Populations in the CCLC

A – Project/Programme Background and Context:

Provide brief information on the problem the proposed project/programme is aiming to solve. Outline the economic social, development and environmental context in which the project would operate.

1 – Project context

Climate change poses a major threat to the socio-economic development of nations, with particularly pronounced impacts in developing countries¹. They have caused significant damage and increasingly irreversible losses within terrestrial, aquatic, cryospheric, coastal, and oceanic ecosystems. All of these impacts jeopardize food security, complicate the sustainable management of water resources, and hinder efforts to achieve the Sustainable Development Goals (SDGs). Furthermore, the effects of climate change exacerbate existing inequalities and further marginalize the most vulnerable groups, including women, youth, rural populations, and Indigenous communities, whose livelihoods are heavily dependent on climate-sensitive natural resources².

West Africa is experiencing faster global warming than the global average, with average annual temperatures rising between 1 and 3°C since the mid-1970s. At the same time, rainfall patterns are characterized by increased variability and increasingly frequent extreme weather events³. Countries in the region, including Benin, have limited capacity to deal with climate risks, particularly in terms of

¹ GIEC (2019). Résumé à l'intention des décideurs, Changement climatique et terres émergées : rapport spécial du GIEC sur le changement climatique, la désertification, la dégradation des sols, la gestion durable des terres, la sécurité alimentaire et les flux de gaz à effet de serre dans les écosystèmes terrestres. [P.R. Shukla, J. Skea, E. Calvo Buendia, V. Masson-Delmotte, H.- O. Pörtner, D. C. Roberts, P. Zhai, R. Slade, S. Connors, R. van Diemen, M. Ferrat, E. Haughey, S. Luz, S. Neogi, M. Pathak, J. Petzold, J. Portugal Pereira, P. Vyas, E. Huntley, K. Kissick, M. Belkacemi, J. Malley, (dir. publ.)]. Sous presse

² IPCC (2023). Synthesis report of the IPCC sixth Assessment Report (AR6): summary for policymakers. Cambridge University Press, Cambridge, United Kingdom and New York, NY, USA, 36 p.

³ https://www.ipcc.ch/report/ar6/wg2/chapter/chapter-9/?utm_source=chatgpt.com, consulté le 11 mai 2025.

technical, organizational and financial resources⁴. Benin is particularly vulnerable, exposed to increasing variability in climate extremes (floods, droughts, heat waves), which seriously and lastingly compromises its socio-economic development⁵. According to estimates, losses related to the 2019 floods amounted to approximately US\$91.1 million, primarily affecting agriculture, livestock farming, fishing, industry, commerce, and services, with the destruction of nearly 4,900 hectares of crops⁶.

In Benin, communities located on the edge of the coastal and Atlantic lagoons are highly exposed to the effects of climate change⁷. This densely populated coastal and lagoon area (approximately 1.9 million people, or 17% of the national population)⁸ is characterized by active coastal erosion (up to 30m/year in Cotonou) and increased flooding, linked both to rising sea levels and to reduced sediment flow caused by the construction of upstream dams. Exposure to climate variability in this lagoon area poses a threat to habitats, infrastructure, and local livelihoods, particularly artisanal fishing and subsistence farming dependent on the lagoons⁹. In these municipalities, the hydrological variability of the lagoons (irregular opening or closing of sand barriers, salinization, sedimentation) destabilizes ecosystems, reducing local yields and increasing economic and health risks for populations that are often marginalized and lack robust institutional crisis management mechanisms¹⁰. Faced with this situation, these communities are particularly vulnerable to climatic and socio-economic impacts, making it urgent to strengthen adaptation measures and implement resilience tools adapted to these sensitive areas of Southwest Benin.

1.1 –Geographical, socio-economic and climatic profile of Benin

1.1.1 – Geographical profile of Benin

Benin is a coastal country in West Africa located in the tropical zone, between the Equator and the Tropic of Cancer (latitudes 6°30' to 12°30' North and longitudes 1° to 3°40' East), extending approximately 700 km from north to south, with a 121 km coastline along the Atlantic Ocean. Administratively, it currently comprises 12 departments subdivided into 77 communes, 546 arrondissements, and 5,290 villages or city districts¹¹. Its geographic configuration provides remarkable natural diversity, with five major physical regions, including a low coastal and lagoon plain, a hilly central plateau, fertile plains in the east, the Atacora mountain range in the northwest, and wetlands in the south. The country is drained by several major river basins, including those of the Niger, Ouémé, Mono-Couffo, and Volta, and hosts numerous strategic water bodies such as Lake Nokoué, Lake Ahémé, and the Porto-Novo lagoon¹². This hydrographic wealth represents both an economic potential and a source of vulnerability to climate hazards, particularly floods, coastal erosion, saline intrusion, and seasonal droughts

Rainfall varies significantly across regions, ranging from over 1,200 mm/year in Cotonou to less than 900 mm in northern areas. The gently undulating terrain, often degraded silico-clay soils, and the dependence of rural communities on natural resources (rainfed agriculture, lagoon fishing, extensive livestock farming) increase the country's exposure to the effects of climate change. This vulnerability is particularly pronounced in coastal and lagoon areas, where a significant proportion of the national

⁴ Saber, M., Koroma, A., Posite, R. V., Ly, A., Tejan Bah, A. M., Abdulai, A., ... & Mewafy, F. (2025). A comprehensive review of climate change adaptation and disaster risk reduction in Africa. *Journal of Water and Climate Change*, 16(5), 1831-1862.

⁵ Azagoun, V. V. A., Komi, K., Vissin, E. W., & Klassou, K. S. (2025). Analysis of the Dynamics of Hydroclimatic Extremes in Urban Areas: The Case of Grand-Nokoué in Benin, West Africa. *Climate*, 13(2), 39.

⁶ Azagoun, V. V. A., Komi, K., Vissin, E. W., & Klassou, K. S. (2025). Analysis of the Dynamics of Hydroclimatic Extremes in Urban Areas: The Case of Grand-Nokoué in Benin, West Africa. *Climate*, 13(2), 39.

⁷ https://unfccc.int/sites/default/files/resource/PNA_BENIN_2022_0.pdf, consulté le 11 mai 2025.

⁸ <https://www.wacaprogram.org/country/benin>, accessed May 11, 2025.

⁹ <https://www.worldbank.org/en/news/press-release/2023/12/06/benin-can-create-opportunities-for-a-just-energy-transition-and-green-inclusive-growth-world-bank-report?utm>

¹⁰ Davies-Vollum, K. S., Koomson, D., & Raha, D. (2024). Coastal lagoons of West Africa: a scoping study of environmental status and management challenges. *Anthropocene Coasts*, 7(1), 7.

¹¹ Law No. 2013-05 of May 27, 2013, concerning the creation, organization, powers and operation of local administrative units in the Republic of Benin.

¹² <https://presidence.bj/home/le-benin/geographie/>, accessed May 15, 2025.

population lives, facing recurrent extreme events and the absence of robust institutional adaptation mechanisms. Figure 1 below shows the geographical situation of Benin, highlighting the project's beneficiary municipalities.

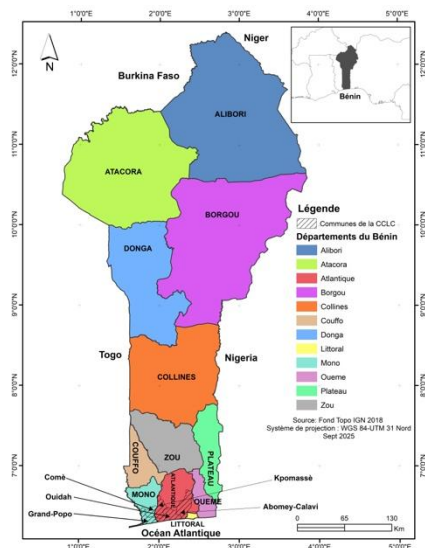


Figure 1 : Geographical location of Benin
Source : National Geographic Institute (IGN), 2018.

1.1.2 – Socio-economic profile of Benin

Benin, a small francophone state in West Africa, has been classified as a lower-middle-income country since 2020. With an open economy, fertile agricultural land, and recognized political stability, the country also benefits from a strategic location at the heart of the Abidjan-Lagos and Cotonou-Niamey economic corridors, making it a regional hub for trade and services. The population of Benin is estimated at approximately 13.7 million in 2024, with a very young demographic structure (over two-thirds under 25 years old)¹³, predominantly concentrated in the southern and coastal areas.

Despite sustained economic growth over the past decade (7.5% in 2024) and a reduction in the national poverty rate to 31% in 2024 (down from 33.2% in 2023), disparities persist, particularly between urban areas (30%) and rural areas (nearly 38%)¹⁴. Approximately 70% of the active population depends on sectors highly sensitive to climate, such as rainfed agriculture, artisanal fishing, and subsistence activities. This heavy dependence increases the vulnerability of poor households to the growing impacts of climate change (droughts, floods, coastal erosion, hydrological variability)¹⁵. Without action, economic and employment losses related to climate hazards could undermine development gains and further exacerbate inequalities.

In this context, the implementation of an ambitious, inclusive, and equitable adaptation program is essential to strengthen the resilience of vulnerable populations, safeguard key productive sectors, and support a just transition toward low-carbon, climate-resilient development

1.1.3 – Climatic characteristics of Benin

Benin exhibits significant climatic diversity, which strongly influences its ecosystems, economic

¹³ <https://www.wfp.org/operations/bj03-benin-country-strategic-plan-2024-2027?utm>

¹⁴ <https://www.worldbank.org/en/news/press-release/2025/07/17/benin-can-mobilize-more-domestic-resources-to-drive-inclusive-growth-and-equity?utm>, accessed May 15, 2025.

¹⁵ <https://www.wfp.org/countries/benin?utm>, accessed May 15, 2025.

activities, and the living conditions of its population. The country is primarily characterized by two types of climate: a humid equatorial climate in the south, and a tropical climate in the central and northern regions. The south benefits from a bimodal rainfall pattern, with two rainy seasons (from April to mid-July and from mid-September to October) and two dry seasons (from November to March and from mid-July to mid-September), resulting in high humidity and dense vegetation. In contrast, the central and northern regions experience a tropical climate with a single season, a long dry season from November to April, followed by a shorter rainy season from June to September, often marked by significant interannual variability.

From an agro-climatic perspective, this climatic transition from south to north allows for the distinction of three main zones: the Guineo-Congolian zone in the south, characterized by high humidity and forest-type vegetation; The central Sudanian-Guinean zone is a transitional zone, well-suited to rainfed agriculture, while the northern Sudanian zone is more arid, with scarcer water resources and predominantly savanna vegetation. This climatic diversity exposes the country to varying degrees of climate risk across different regions, ranging from recurrent flooding in the south to prolonged drought in the north, thus exacerbating the vulnerability of agricultural, water, and social systems nationwide. A thorough understanding of these climate dynamics is crucial for guiding adaptation priorities and directing investments toward differentiated and localized measures.

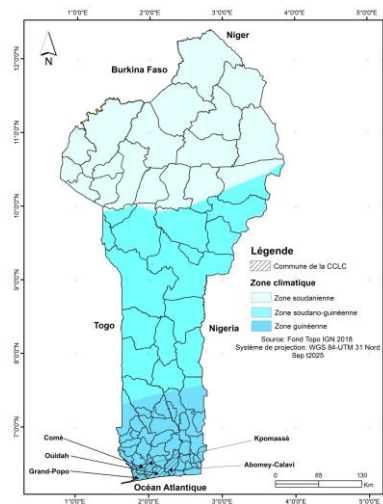


Figure 2 : Climatic zones of Benin

Source : National Geographic Institute (IGN), 2018.

The Guineo-Congolian zone, located in southern Benin between latitudes 10°00' and 12°20' North and longitudes 1°00' and 3°50' East, is characterized by a four-season climate, with an average annual rainfall of 1,217.1 mm distributed over approximately 87 rainy days. Monthly rainfall amplitude reaches 260.6 mm between the wettest and driest months. The annual average temperature is 27.4 °C, with an annual thermal amplitude of 3.7 °C. There is a long rainy season from April to July, followed by a short rainy season from September to mid-November, separated by two dry periods: a long dry season from mid-November to mid-March and a short dry season from mid-July to the end of August. Daily temperatures generally range between 25 °C and 29 °C, with relative humidity varying from 69% to 97%¹⁶.

The Sudanic-Guinean zone, located in the central part of the country (between 8°00' and 10°00' North latitude, and 1°40' to 3°50' East longitude), constitutes a climatic transition area, marked by a hybrid rainfall regime between bimodal and unimodal patterns. Average annual rainfall ranges from 900 mm to 1,110 mm, spread over about 75 days. Relative humidity varies widely, from 31% to 98%, while average temperatures fluctuate between 25 °C and 29 °C throughout the year.

The Sudanic zone, covering the northern part of the country between 10°00' and 12°20' North

¹⁶ MCVDD (2022), National Climate Change Adaptation Plan of Benin, Cotonou, Benin, 175p.

latitude and 1°00' to 3°50' East longitude, is characterized by a drier climate, with average annual rainfall ranging from 900 mm to 1,100 mm, generally distributed over 71 days. Relative humidity shows strong seasonal variability, dropping to only 18% during the Harmattan period (December to February) and rising to 99% in August, at the peak of the rainy season. Monthly average temperatures range between 24 °C and 31 °C, with frequent peaks at the start of the dry season¹⁷.

1.1.4 – Future climate variability in Benin

With global warming estimated at +1.1°C between 2011 and 2020¹⁸, climate projections for West Africa (and therefore for Benin) suggest that the country will be increasingly exposed to severe and unpredictable weather events. Temperature anomalies recorded between 1981 and 2010 range from -0.7°C to +1.3°C¹⁹, confirming increasing thermal instability. Climate models predict widespread warming between 2030 and 2050, with deviations from normal ranging from +0.8°C to +2.3°C depending on the representative concentration scenarios (RCP2.6, RCP4.5, RCP8.5).

Regarding rainfall, significant uncertainty remains: some models predict a decrease in precipitation, while others project a slight increase depending on the region and temporal horizon. However, outputs from the CSIRO and CCCMA models indicate a prevailing trend toward a reduction in annual volumes, particularly in the vulnerable agricultural areas of central and northern Benin. Furthermore, analysis of the West African monsoon seasonal cycle suggests a potentially shorter and delayed mid-rainy season, with more frequent droughts and more intense rainfall events. These projections signal an increase in the risks to which the country is exposed, notably in rainfed agriculture, water resource management, and hydraulic infrastructure. They highlight the urgency of developing differentiated, resilient adaptation strategies based on available scientific data. Figure 3 illustrates these various dynamics related to climate warming.

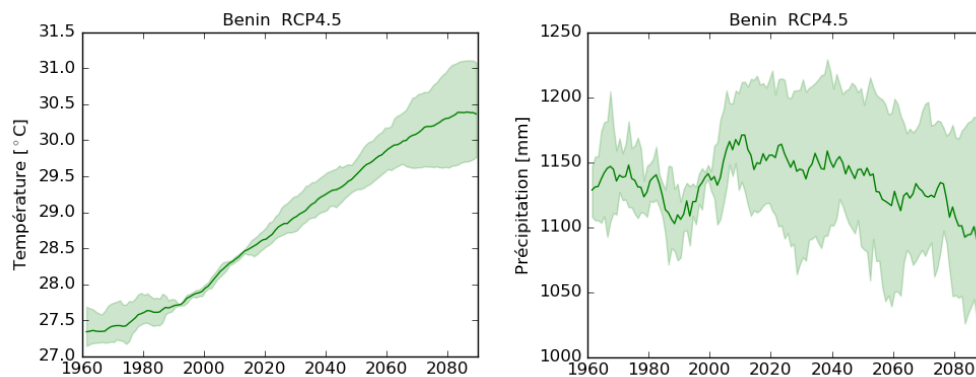


Figure 3 : Projections from the regional climate model for annual precipitation (top) and temperature displayed as a 20-year moving average for Benin.

The line represents the ensemble mean, while the shaded area indicates the spread between models. The projections are based on the RCP4.5 emission scenario.

Source: Climate Analytics RegioClim Tool²⁰.

This overall warming trend is also confirmed under the SSP5-8.5 scenario. Under this scenario, Benin will experience an increase in the average surface air temperature, which is expected to reach 33.34°C (+/- 1.36), and rainfall will not only vary but is projected to increase, reaching 1,211.52 mm (+/- 94.26) by the end of the century²¹.

¹⁷ MCVDD (2022), National Climate Change Adaptation Plan of Benin, Cotonou, Benin, 175p.

¹⁸ IPCC (2023). Synthesis report of the IPCC sixth Assessment Report (AR6): summary for policymakers. Cambridge University Press, Cambridge, United Kingdom and New York, NY, USA, 36 p.

¹⁹ IPCC (2023). Synthesis report of the IPCC sixth Assessment Report (AR6): summary for policymakers. Cambridge University Press, Cambridge, United Kingdom and New York, NY, USA, 36 p.

²⁰ <https://regioclim.climateanalytics.org/choices>, accessed on January 13, 2025..

²¹ <https://climateknowledgeportal.worldbank.org/country/benin/trends-variability-projections>, accessed on January 13, 2025.

1.2 – Selection of municipalities for project intervention

The Community of Communes of the Coastal Lagoons (CCLC) of Benin is an inter-municipal entity comprising the communes of Comé, Kpomassè, Grand-Popo, Ouidah and Abomey-Calavi. These local authorities share an interconnected hydrological system, including the coastal lagoon, the Aho channel, Lake Ahémé and the mouth known as "the King's mouth" (figure 4).

The coastal zone is an important geographical entity for environmental preservation. It is an area located approximately 50 km beyond the zone of influence of the mean tide and covers roughly 8,700 km². It encompasses 24 municipalities in Benin, spread across five departments: Atlantique, Littoral, Mono, Ouémé and Plateau.

The inter-municipal area is located in agro-ecological zones VI (the barren land zone) and VIII (the fisheries zone). Its local economy is based on various productive activities, including fishing, subsistence farming, cash crop farming, small-scale livestock farming, seasonal work, small-scale trade, and agri-food processing (INSAE, 2016)²².

The Communauté de Communes des Lagunes Côtières (CCLC) faces major climate risks. This inter-municipal area is experiencing increasing vulnerabilities such as annual cyclical floods, rising Atlantic Ocean waters, strong winds, extreme heat, and prolonged droughts. These phenomena lead to multiple environmental and socio-economic consequences, including land degradation, coastal erosion, depletion and failure of fish species to reproduce, mangrove destruction, and heightened food insecurity (PCC, 2017). In this context, financing local initiatives aimed at strengthening resilience to climate change is essential to ensure effective and sustainable adaptation for vulnerable communities.

2 – Geographic, socio-economic and climatic profile of the project's intervention areas

Local residents are involved in economic, industrial, tourism and agricultural activities, such as fish farming, fishing and livestock breeding.

2.1 – Geographic, socio-economic and climatic profile of the municipalities of the CCLC in the Atlantique department

The municipalities of Abomey-Calavi, Ouidah, and Kpomassè, located in the Atlantique Department, are characterized by a strong dependence on natural resources and significant exposure to climate risks. Abomey-Calavi, experiencing rapid demographic and urban growth, faces recurrent flooding, coastal erosion, and soil degradation. High heat and humidity further exacerbate health risks. Ouidah, situated on coastal and marshy plains, lies within a fisheries zone and is particularly vulnerable to flooding, soil salinization, and the depletion of fish resources. These risks are amplified by urbanization and pressure on ecosystems. Kpomassè, located on the shores of Lake Ahémé and its low-lying floodplains, experiences frequent flooding, sedimentation, and water pollution, reducing agricultural and fisheries productivity. Overall, coastal and lacustrine exposure, dependence on agricultural and fishery activities, population growth, and the lack of protective infrastructure strongly reinforce the socio-economic and ecological vulnerability of these municipalities, highlighting the urgent need for targeted adaptation actions.

From a socio-economic and cultural perspective, these municipalities are home to multiethnic populations whose livelihoods are closely linked to natural resources. Abomey-Calavi hosts a diverse population (Aizo, Fon, Goun, Nago, Toffin, and Yoruba) spread across nine districts and 149 villages or neighborhoods, engaged in income-generating activities such as agriculture, fishing, trade, crafts, and tourism. Ouidah, primarily inhabited by Fon and Adja populations across ten districts and 77 villages, benefits from historical and cultural tourism. Kpomassè, a rural municipality on the shores of Lake Ahémé, includes Adja, Pédah, Fon, and Yoruba communities spread over nine districts and 76 villages, where traditional agricultural and fishing practices are deeply rooted in community life.

²² INSAE (2016) Main socio-demographic and economic indicators, Cotonou, Benin.

Rainfall variability, flooding, and coastal erosion, combined with population pressure, settlement in high-risk areas, and insufficient infrastructure, increase the vulnerability of these populations and their livelihoods, underscoring the need for integrated and prioritized socio-ecological adaptation measures.

2.2– Geographical, socio-economic and climatic profile of the municipalities of the CCLC in the Mono department

The municipalities of Comé and Grand-Popo, located in southwestern Benin in the Mono Department, feature flat terrains composed of lowlands and floodplains, with a sandy coastal ridge in Grand-Popo. Comé is crossed by Lake Ahémé and tributaries of the Mono River, while Grand-Popo opens onto the Atlantic Ocean. Both municipalities experience a tropical climate, with Comé having two rainy and two dry seasons, and Grand-Popo experiencing four alternating seasons of rain and drought. This combination of low elevation, exposure to rivers and the sea, and high rainfall variability exposes their populations to recurrent flooding, sedimentation, coastal erosion, soil salinization, and degradation of water resources, directly affecting agriculture, fishing, and aquaculture.

These geographical and climatic conditions, combined with the residents' strong dependence on natural resources, also shape the socio-economic and cultural profiles of the municipalities. Comé and Grand-Popo have approximately 80,000 and 66,000 inhabitants, respectively, spread across five and seven districts and numerous villages. The populations are multiethnic: Comé is home to the Xwéla, Waci, and Sawxè, while Grand-Popo includes the Xwla, Xuéla, and Guens. A wide diversity of religious and cultural practices is also integrated into community life. The local economy relies on agriculture, fishing, aquaculture, trade, crafts, and, in the case of Comé, cultural tourism sectors that provide the majority of income and employment. These activities, highly dependent on natural resources and climatic conditions, combined with population pressure and insufficient adapted infrastructure, increase the socio-economic and cultural vulnerability of these municipalities to climate change.

3 – Vulnerability of CCLC municipalities to climate change

The project will benefit the communities of the five municipalities that make up the Communauté de Communes des Lagunes Côtières (CCLC) in Benin: Grand-Popo, Comé, Kpomassè, Ouidah, and Abomey-Calavi, located across the Mono and Atlantique Departments. This inter-municipal territory, situated in the coastal zone, is particularly exposed to the effects of climate change, combining major environmental, social, and economic vulnerabilities. Figure XX shows the areas of flooded cropland within the CCLC territory. Cartographic analysis of these areas reveals significant structural exposure to flood risks. Of more than 35,000 hectares of identified flood-prone land, nearly 14,500 hectares correspond to agricultural zones, mainly located along the coastline, around Lake Ahémé, the Aho channel, and in lowland areas.

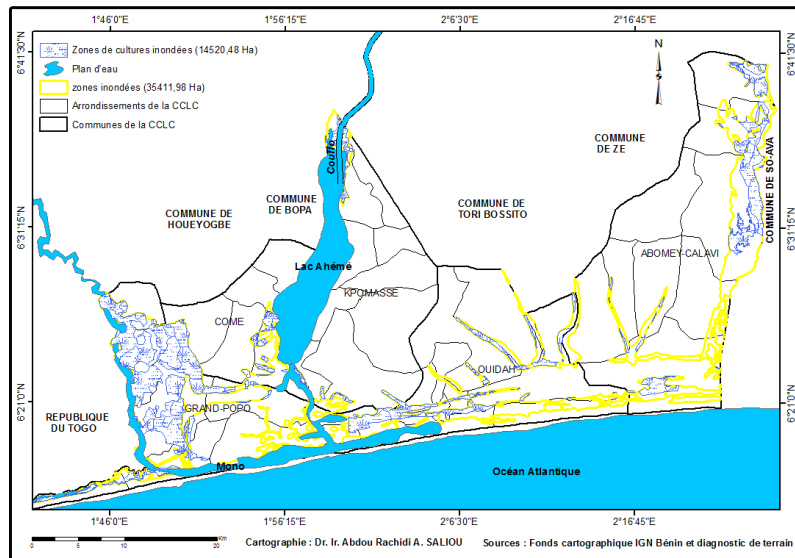


Figure 4 : Flooded agricultural areas

This overlap between agricultural production areas and high-risk zones highlights the direct vulnerability of local livelihoods in the municipalities of Grand-Popo, Comè, Ouidah, Kpomassè, and Abomey-Calavi. Recurrent flooding destroys food and vegetable crops, significantly reducing agricultural productivity and food security. The low topography and immediate proximity to water bodies further increase the territory's sensitivity to seasonal floods and rising groundwater levels. The absence of adequate drainage infrastructure and the degradation of natural buffer zones, such as mangroves, riverbanks, and gallery forests, exacerbate these impacts. This multi-sectoral vulnerability, affecting agricultural, ecological, and social sectors, requires urgent and targeted territorial adaptation responses to climate change.

These vulnerabilities translate into a range of specific climate and environmental risks. Flooding remains the primary risk, followed by localized droughts and strong winds, which notably contribute to mangrove destruction and roof damage. Soil water erosion affects different parts of the CCLC territory: lightly eroded areas are located in the southern parts of Grand-Popo and Ouidah, which are more exposed to coastal erosion; moderately eroded areas are found in the southern parts of Comè, Kpomassè, and Abomey-Calavi; and highly eroded areas correspond to the downstream sections of these same municipalities (Figure 4). These dynamics underscore the need to plan targeted interventions to strengthen community resilience, protect essential infrastructure, and preserve ecosystems that are vital for local livelihoods.

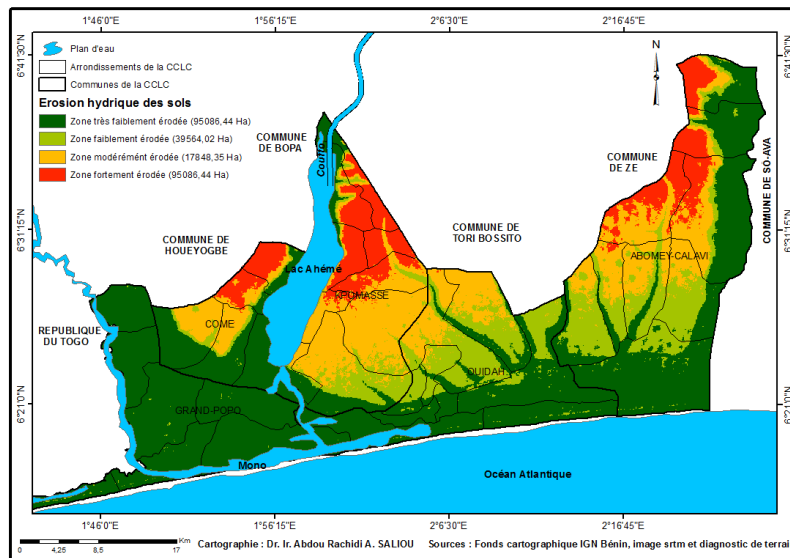


Figure 5 : Erosion hydrique des sols

3.1 Vulnerability of the municipalities of the CCLC in the Atlantic department

The climate vulnerability of the municipalities of Kpomassè, Ouidah, and Abomey-Calavi is primarily manifested through the intensification and recurrence of floods, identified as the dominant hazard in the municipal contingency plans. Additional risks include localized droughts, strong winds, and heatwaves. In Kpomassè, floods have a high probability and severity, persistently affecting agricultural areas and living spaces across several districts. Consequences include riverbank erosion, land degradation, reduced crop yields, decreased incomes, and heightened poverty, which in turn promotes rural exodus. In Ouidah, climate hazards are concentrated in coastal and lagoon areas, where recurrent floods, often combined with strong winds, cause significant damage to homes, local infrastructure, and livelihoods, particularly in the most exposed districts. In Abomey-Calavi, vulnerability is exacerbated by disrupted rainfall patterns, characterized by more intense precipitation over short periods, leading to excessive runoff, accelerated soil erosion, and cyclical flooding. Concurrently, droughts, extreme heat, and strong winds increase environmental and social pressures. Across all three municipalities, these climate hazards have cumulative impacts on households and ecosystems, including crop and livestock losses, land and water resource degradation, as well as social effects such as weakened livelihoods, school dropouts, and increased exposure of women, children, and actors in the agricultural and fisheries sectors. These observations underscore the need for targeted and integrated adaptation interventions.

Climate projections (Figure 6) indicate a significant shift in rainfall patterns in Abomey-Calavi, Kpomassè, and Ouidah, with an earlier onset of the rainy season and higher precipitation totals at the beginning and end of the season. Projected monthly rainfall for May-June and September-October exceeds historical averages, while the short dry season tends to diminish. This increased concentration of rainfall over shorter periods significantly heightens the risks of flooding, runoff, and soil erosion, placing pressure on drainage infrastructure, agricultural lands, and residential areas, particularly in low-lying and densely populated areas of the Atlantique Department.

At the same time, a gradual and significant increase in average temperatures is projected in these three municipalities, accompanied by more frequent and intense heatwave events (Figure 7). The interaction between warming and high atmospheric humidity will exacerbate heat stress, health risks, and pressure on water resources, while reducing agricultural productivity and ecosystem resilience. Combined with more irregular rainfall, these climate trends increase the vulnerability of households and livelihoods in these municipalities, underscoring the need for targeted and priority adaptation

measures in line with the objectives of the Adaptation Fund.

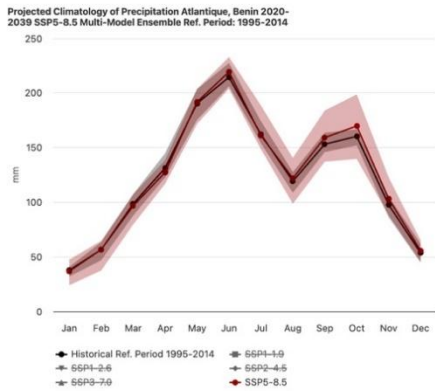


Figure 6 : Variability and projected trends in precipitation across the seasonal cycle for the Atlantic department

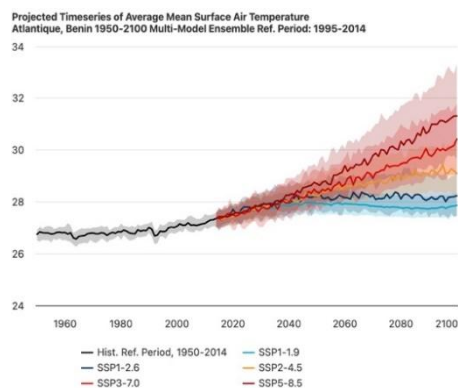


Figure 7 : Projected deviation from the natural variability of mean surface air temperature with trends for the Atlantic department

3.1 – Vulnerability of the municipalities of the CCLC in the Mono department

The municipalities of Grand-Popo and Comè, located in the Mono Department, are particularly vulnerable to the effects of climate change due to their low elevation, proximity to the Atlantic Ocean, Lake Ahémé, and the branches of the Mono River, as well as their strong dependence on natural resources. Gradual temperature increases and rising atmospheric humidity intensify heat stress, pressure on water resources, and the degradation of coastal and lagoon ecosystems. These climate changes directly impact agricultural, horticultural, and fishery activities, which form the basis of local livelihoods, thereby increasing the socio-economic vulnerability of households. Detailed projections of rainfall changes further confirm these trends and help to better understand the specific risks to which these municipalities are exposed.

Multi-model precipitation projections for the Mono Department, applicable to the municipalities of Grand-Popo and Comè, show a significant shift in the seasonal rainfall regime compared to the 1995–2014 period (Figure 8). The rainy season is projected to start earlier, as early as March or April, with a marked increase in rainfall totals in May and particularly in June, reaching approximately 210 to 230 mm depending on the climate scenarios. The short dry season of July–August is expected to weaken, while a second, more pronounced rainfall peak is projected in September–October, exceeding historical averages. This increased concentration of rainfall over short periods significantly raises the risks of flooding in low-lying areas, submersion of riverside zones, runoff, and soil erosion, particularly due to the low elevation and proximity to the Atlantic Ocean, Lake Ahémé, and the branches of the Mono River. This situation heightens the vulnerability of agricultural, horticultural, and fishery activities, as well as livelihoods, in the municipalities of Grand-Popo and Comè.

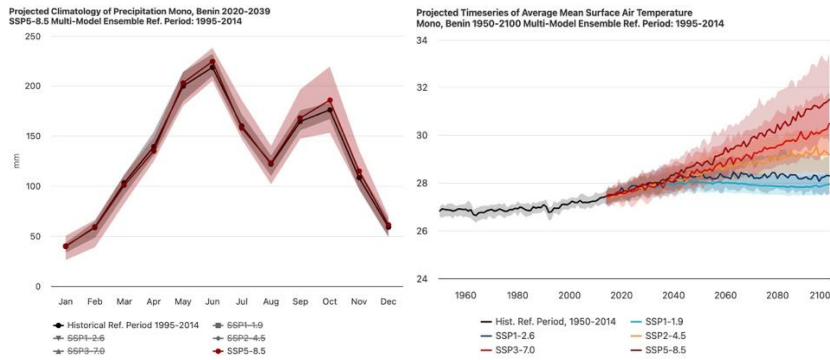


Figure 8 : Variability and projected trends of rainfall across the seasonal cycle for the Mono department

Figure 9 : Projected deviation from the natural variability of mean air surface temperature with trends for the Mono department

In summary, the main climate risks and vulnerabilities are flooding, degradation of agricultural land, and coastal erosion.

In response to these risks and vulnerabilities related to floods and drought pockets, the Communauté des Communes des Lagunes Côtières (CCLC) in Benin has adopted various adaptation and resilience measures. These include support for alternative income-generating activities (credit provision, training, and capacity building for producers), the supply of food, seeds, and agricultural inputs, off-season crop production, promotion of short-cycle crops, community solidarity, temporary migration, raising building foundations, river transport, water management for agricultural purposes, diversification into other economic sectors, reforestation, and greenhouse gas emission reduction. These challenges negatively affect basic resources and local livelihoods, increasing poverty and making communities progressively more vulnerable to the adverse impacts of climate change.

5 – Project choice

The communities of the CCLC will become increasingly vulnerable due to their limited adaptive capacities and high dependence on climate-sensitive resources such as water and agricultural production systems. Most environmental projects operating in the CCLC municipalities do not address the vulnerabilities of the community's basic livelihoods and means of subsistence. The figure below shows the coverage areas of these various projects (Figure 13).

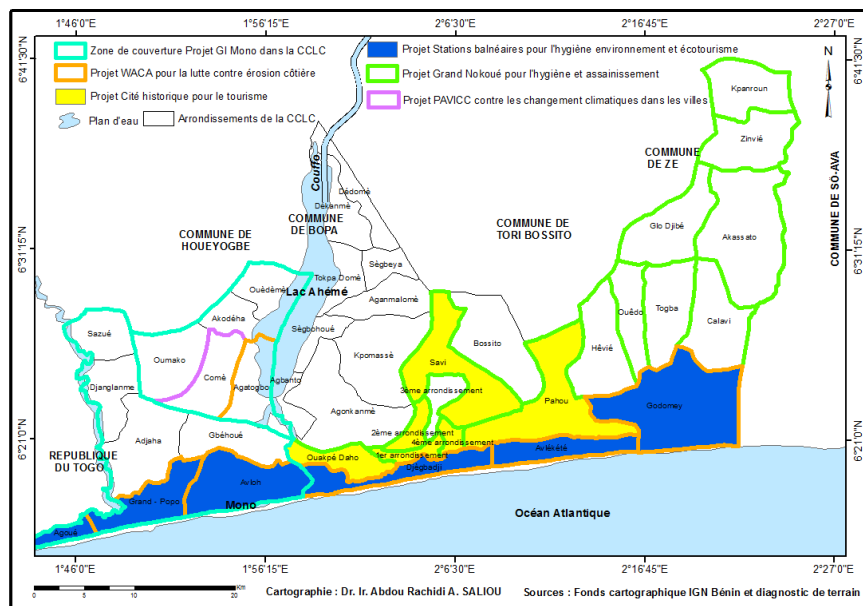


Figure 10 : Environmental projects within the CCLC

Six projects, operating without coordination, are currently implemented in the CCLC municipalities. These include the regional WACA project for coastal erosion control, the GI-Mono and Grand Nokoué waste management projects, the flagship PAG projects for the development of seaside resorts focusing on hygiene and sanitation, and the promotion of the historical city for tourism (only in Ouidah), as well as the PAVICC project on climate change (limited to the urban center of Comé). The stakes are critical, as today's decisions will shape the living conditions of future generations. The sustainable development of the CCLC municipalities depends on finding solutions today to the multiple challenges posed by the adverse effects of climate change. In the face of these environmental challenges, it is urgent to implement appropriate measures to improve the living conditions of the populations of the Communauté des Communes des Lagunes Côtières (CCLC) and to strengthen their adaptive and resilience capacities to climate change.

B – Project/Programme Objectives:

List the main objectives of the project/programme.

The overall objective of this project is to strengthen the resilience of vulnerable populations in the Community of Coastal Lagoons against the impacts of climate change through the adoption of appropriate sustainable and inclusive adaptation practices.

Specifically, this involves:

- strengthening the technical and institutional capacities of stakeholders to improve the resilience of local communities' livelihoods to the impacts of climate change;
- establishing a local financing mechanism to support the development of community initiatives for adaptation to ecosystem restoration and value chains in the plant, animal, and aquaculture sectors;
- developing tools for capitalization and knowledge management.

This project is fully aligned with the Adaptation Fund's results framework. It specifically targets the following results

- **Result 2: Strengthened institutional capacity to reduce risks related to climate-induced socio-economic and environmental losses.**

The project aims to strengthen institutional capacities and community skills in climate risk management and reduction by improving the skills and knowledge needed to develop value chains in the plant, animal, and fisheries sectors in the context of climate change.

- **Result 3: Increased awareness and ownership of climate risk adaptation and reduction processes at the local level.**

The project will promote awareness of climate change, ownership, and community action through capacity building and pilot climate change adaptation actions at the community level.

- **Result 5: Improved resilience of ecosystems to climate change and stress induced by variability**

Through this project, ecosystems and natural resources will be protected, restored, and managed more effectively.

- **Result 6: Diversified and strengthened livelihoods and sources of income for vulnerable people in the target areas**

By boosting value chains in the plant, animal, and fisheries sectors and sustainably improving food and nutrition security, the most vulnerable populations in the CCLC will diversify their sources of income through the adoption of climate-resilient production practices and technologies..

C – Project/Programme Components and Financing:

Fill in the table presenting the relationships among project components, activities, expected concrete outputs, and the corresponding budgets. If necessary, please refer to the attached instructions for a detailed description of each term.

For the case of a programme, individual components are likely to refer to specific sub-sets of stakeholders, regions and/or sectors that can be addressed through a set of well defined interventions / projects.

Table 1 : Cost of project components

Project/Programme Components	Expected Concrete Outputs		
Component 1: Strengthening the technical and institutional capacities of stakeholders to improve the resilience of local communities' livelihoods to the impacts of climate change	Output 1.1 : 01 summary report on practices and needs for adaptation to climate change, technical and organizational capacities of local communities involved in ecosystem restoration and plant, animal, and aquaculture sectors developed; 08 training modules developed; 16 capacity-building sessions for ecosystem restoration stakeholders and the three organized sectors; 40 community adaptation initiatives designed by ecosystem restoration and value chain actors from the three sectors	Outcome 1.1 : The technical and organizational capacities of ecosystem restoration and plant, animal, and aquaculture sector stakeholders are sustainably strengthened, enabling them to design and implement resilient climate adaptation initiatives.	308.000
	Output 1.2 : 01 summary report on climate-resilient ecosystem and agricultural, livestock, and aquaculture restoration practices developed; 04 training modules on ecosystem restoration, development, and governance of each of the three developed sectors; 05 institutional capacity building workshops organized	Outcome 1.2 : Local and sectoral institutions have increased capacities to integrate climate adaptation into planning, regulation, and support for ecosystem restoration and the development of agricultural, livestock, and aquaculture value chains, thereby ensuring sustainable and inclusive governance of climate change resilience.	100.000
Component 2: Establishment of local financing mechanisms to support the development of community initiatives for ecosystem restoration and value chains in plant, animal, and aquaculture sectors	Output 2.1 : 02 capacity-building sessions are organized for the CCLC; 01 convention describing the fund transfer modalities is signed between the FNEC and the CCLC; 01 transfer of funds equivalent to the planned annual amount is carried out	Outcome 2.1 : The AF resources are transferred by the FNEC to the CCLC for the benefit of vulnerable communities for ecosystem restoration and the development of agricultural, livestock, and aquaculture sectors.	40.000
	Output 2.2 : 40 local climate change adaptation initiatives are selected, 01 annual evaluation report	Outcome 2.2 : The resilience of the livelihoods of vulnerable actors in the restoration of ecosystems in plant, animal, and fisheries sectors is strengthened thru the implementation of adaptation initiatives funded by the EDA project of the Adaptation Fund.	3.030.000
Composante 3 : Sustaining the project's achievements and knowledge management	Output 3.1 : 01 mechanism for mobilizing sustainable financing is available; 01 public-private partnership for the sustainability of the achievements of the various funded initiatives is established	Outcome 3.1 : A sustainability strategy is developed and implemented, ensuring continuity, local ownership, and the integration of project achievements into sustainable development and climate change adaptation policies, mechanisms, and practices.	70.000
	Output 3.2 : 01 toolbox summarizing the best practices and successes of the funded initiatives is available; 05 exchange visits are conducted; 05 experience-sharing workshops are organized; the FNEC digital platform disseminates practices and lessons learned from the project at the regional and national levels; 02 information dissemination systems on adaptation measures are strengthened	Outcome 3.2 : Knowledge management is strengthened, and the lessons learned as well as the best adaptation practices are documented, capitalized, and disseminated inclusively to promote learning, replication, and scaling up of climate change adaptation actions.	70.000
A – Project activities cost			3.618.000
B – Project execution cost (9.5% of total project cost)			379.790
Total project Cost			3.997.790
C – FNEC management cost (8.5% implementation cost)			339.812
Amount of Financing Requested			4.337.602

D – Projected Calendar:

Indicate the dates of the following milestones for the proposed project/programme

Table 2 : Implementation period of the project

Milestones	Expected Dates
Start of Project/Programme Implementation	2027
Mid-term Review (if planned)	2030
Project/Programme Closing	2032
Terminal Evaluation	2032

PART II: PROJECT / PROGRAMME JUSTIFICATION

A – Components of the project

Describe the project/programme components, particularly focusing on the concrete adaptation activities of the project, and how these activities contribute to climate resilience. For the case of a programme, show how the combination of individual projects will contribute to the overall increase in resilience. *Specify how the project/programme enables devolving decision making to the lowest appropriate level and gives local institutions and communities more direct access to finance and decision-making power over how adaptation actions are defined, prioritized, designed, implemented; how progress is monitored and how success is evaluated.*

The project has three main components, namely:

- Strengthening technical and institutional capacities to improve the resilience of local communities' livelihoods in the face of climate change impacts;
- Establishing local financing mechanisms to support the development of community adaptation initiatives integrated into the value chains of plant, animal, and fisheries sectors;
- Sustaining the project's achievements and knowledge management.

Component 1: Strengthening the technical capacities of local communities for the design and implementation of initiatives aimed at increasing the resilience of livelihoods in the face of climate change impacts

The first component of the project is dedicated to strengthening the capacities of development actors in the Community of Coastal Lagoon Communes (CCLC) eligible for grants, as well as their technical and institutional partners. It aims to create the necessary conditions for the design, implementation, and monitoring of locally-led adaptation sub-projects (LLA). The targeted beneficiaries include women's and youth groups, as well as local governance structures committed to ecosystem restoration and the sustainable development of plant, animal, and aquaculture sectors. The expected results and products of this component aim to address several cross-cutting constraints frequently encountered by local organizations during the implementation of adaptation projects. This includes limited technical capacities for the identification, formulation, and implementation of climate change resilience projects, as well as an still insufficient understanding of the approaches and specific requirements for locally-led adaptation projects (LLA). The component will thus focus on supporting beneficiary organizations throughout the lifecycle of adaptation sub-projects, from identifying priorities to operational implementation, including the design of locally-led sub-projects, planning, and monitoring and evaluation. It will also strengthen the CCLC's capacity to select and oversee the implementation of LLA projects.

Outcome 1.1 : The technical and organizational capacities of ecosystem restoration and plant, animal, and aquaculture sector development actors are sustainably strengthened, enabling them to design and implement resilient climate adaptation initiatives.

The activities planned under this outcome aim to strengthen the capacities of potential local beneficiary organizations so that they can design, implement, and monitor adaptation sub-projects conducted at the local level.

- **Output 1.1: 01 synthesis report on practices and adaptation needs to climate change, technical and organizational capacities of local communities involved in ecosystem restoration and the development of plant, animal, and aquaculture sectors elaborated; 04 training modules developed; 04 capacity-building sessions for ecosystem restoration and three sector stakeholders organized; community adaptation initiatives designed by ecosystem restoration and three sector value chain development stakeholders**
- **Activity 1.1.1:** *Conducting a participatory mapping of climate change adaptation initiatives and the needs for technical and organizational capacity building of local communities involved in ecosystem restoration and the development of plant, animal, and aquaculture sectors. The identification of climate change adaptation initiatives and capacity-building needs will allow for the development of tailored and needs-based technical assistance. This identification will allow for the refinement of the eligibility menu for sub-projects (presented in Annex 3) to be financed under this project. The needs assessment will, on the other hand, take into account the gaps in the development, management, and monitoring of locally implemented adaptation sub-projects. Thru gender-sensitive consultation workshops, all stakeholders will be engaged in the process of identifying and prioritizing climate change adaptation initiatives and capacity-building needs. The results of these assessments will be compiled in a report that will highlight the priority adaptation initiatives of the local communities of the CCLC, their capacity-building needs, as well as the actions to address them. This report will serve as the basis for defining training modules for stakeholders and refining the eligibility menu.*
- **Activity 1.1.2:** *Development of gender-sensitive technical training for local communities involved in ecosystem restoration and the development of value chains in plant, animal, and aquaculture sectors. Based on the results of activity 1.1.1, four (04) training modules will be developed: (i) a general module on ecosystem restoration, (ii) a general module on the value chains of the three sectors, (iii) an ecosystem restoration module specific to the context of the beneficiary communes, and (iv) a development module for the three sectors, adapted to the context of the beneficiary communes. Both specific modules will be accompanied by examples of relevant adaptation initiatives.*
- **Activity 1.1.3:** *Support in the design of community adaptation initiatives for the benefit of local communities involved in ecosystem restoration and the development of value chains in plant, animal, and aquaculture sectors. Thru the facilitation of theoretical modules coupled with practical exercises based on the results of activity 1.1.2, potential beneficiaries will be trained in the design and implementation of LLA adaptation initiatives. The practical work will be based on the adaptation initiatives identified by the participants themselves, in accordance with the established eligibility menu. The CCLC facilitators, recruited under activity 1.2.3, will provide close support to each sub-project leader, from the identification phase to the complete finalization of the project document. During this activity, 04 capacity-building sessions will be organized, namely one (01) session dedicated to the generalities and identification of sub-project ideas, two (02) sessions on practical cases of sub-project design, and one (01) for the refinement of sub-project documents.*
- **Activity 1.1.4:** *Capacity building in the management and monitoring of LLA adaptation sub-projects for the benefit of the beneficiaries. This activity will be carried out after the selection of adaptation sub-projects and will equip the beneficiaries with the necessary tools for the effective management and monitoring of their sub-projects.*

Outcome 1.2 : The CCLC and local structures have the necessary capacities to select, support, and monitor the implementation of LLA sub-projects aimed at ecosystem restoration and the development of agricultural, livestock, and aquaculture value chains, thereby ensuring sustainable and inclusive governance of climate change resilience.

The Community of Communes of Coastal Lagoons (CCLC) will support robust processes for the identification, development, and implementation of subsidized sub-projects, including the selection, monitoring, and evaluation of the annual performance of beneficiaries of LLA adaptation initiatives. This result will focus on strengthening the institutional capacities of the CCLC and local structures thru targeted training, technical support, and skills transfer, to ensure inclusive and responsible implementation of adaptation sub-projects based on the needs of local communities. It will promote coordination at multiple levels, empower local actors to effectively manage adaptation sub-projects, and strengthen the capacity of the CCLC and local institutions to mobilize additional resources, monitor progress, and support locally-led adaptation efforts over time.

- **Output 1.2 : Output 1.2: 01 synthesis report on the capacity building needs of the CCLC and local structures developed; 01 training plan completed; institutional capacity building workshops organized and 25 facilitators recruited and trained**
- **Activity 1.2.1:** *Evaluation of capacity-building needs of the CCLC and local structures in the selection and implementation of LLA sub-projects. Assessments of the capacity-building needs of the CCLC and local partner structures involved in ecosystem restoration and the development of agricultural, livestock, and aquaculture value chains will be conducted to lay the groundwork for activity 1.2.2. Consultations will be conducted with CCLC executives and local elected officials, as well as with local partner structures, to assess their capacity-building needs for the selection and implementation of LLA projects. This assessment will take into account the needs in terms of environmental and social impact assessment of the CCLC, as well as the evaluation of gender aspects. The synthesis report on capacity-building needs will be the main deliverable of this activity. Activity 1.2.1 will be combined with activity 1.1.1.*
- **Activity 1.2.2:** *Capacity building for the CCLC and local structures based on the needs identified within the framework of activity 1.2.1 and the specificities of LLA adaptation projects. This activity aims to sustainably strengthen the institutional, technical, and operational capacities of the CCLC as well as the involved local structures, enabling them to fully play their role in the design, support, selection, implementation, and monitoring of locally-led adaptation initiatives (LLA). It will build on the capacity-strengthening needs identified in activity 1.2.1. It will equip the CCLC and local structures with tools, skills, and common frameworks adapted to the local context to ensure the quality, coherence, and sustainability of LLA adaptation projects, while ensuring their alignment with national priorities and the requirements of technical and financial partners. Based on a well-developed training plan, sessions will be organized to address the principles, objectives, and specificities of locally-led adaptation (LLA), the development and management of LLA projects, as well as monitoring and evaluation, learning, and accountability. At the end of these training sessions, the selection criteria for adaptation sub-projects that are in line with the context of the beneficiary municipalities will be defined.*
- **Activity 1.2.3:** *Recruitment and training of CCLC facilitators to support the development and implementation of local adaptation sub-projects. This activity aims to equip the CCLC with an operational local support system, thru the recruitment and training of dedicated facilitators capable of providing effective support to communities and local adaptation sub-project leaders. These facilitators are an essential link in the implementation of the Locally Led Adaptation (LLA) approach, ensuring the interface between communities, local structures, and the CCLC. Their role will consist of facilitating the participatory identification of adaptation needs, supporting the technical and financial structuring of sub-projects, as well as assisting in their implementation, monitoring, and capitalization, in compliance with eligibility criteria, environmental and social requirements, as well as principles of gender equality and social inclusion. They will be trained in accordance with the capacity-building plan developed during activity 1.2.2 and will ensure the*

continuity of the training sessions conducted during activity 1.1.3, as well as operational coaching. In total, twenty-five (25) facilitators will be recruited at a rate of five (05) per commune.

Component 2: Selection, financing, and implementation of concrete adaptation initiatives carried out at the local level

The second component of the project aims to strengthen the resilience of local communities in the five communes of the CCLC by restoring ecosystems and developing value chains in plant, animal, and aquaculture sectors. Thru this component, community-level adaptation capacity will be strengthened thru the implementation of concrete, locally-led adaptation sub-projects (LLA), which will improve climate-adapted livelihoods and protect ecosystems against the effects of climate change in the beneficiary communes. By promoting resilient rural livelihoods and improving degraded ecological infrastructure to support ecosystem services, the vulnerability of communities and ecosystems will be reduced.

By drawing on local knowledge and prioritizing the needs of vulnerable groups (women and people with disabilities), this component ensures that adaptation measures are not only technically effective but also socially just and environmentally sustainable. It links planning with action, strengthens resilience at the local level, and contributes to Benin's broader climate and development objectives.

The selection of sub-projects will be based on small-scale climate projections, an analysis of ecosystems and plant, animal, and aquaculture sectors, socio-economic indicators of climate vulnerability, as well as compliance with priority adaptation initiatives identified during stakeholder consultations and presented in Annex 3. These initiatives will be confirmed, as appropriate, during the participatory mapping of climate change adaptation initiatives (activity 1.1.1). The grants awarded for the sub-project activities will amount to US00,000 each, for a total budget allocation of US ,455,000 intended to finance all the sub-projects. The implementation of the subsidized sub-projects may be staggered, and the funds will be disbursed in installments to ensure a solid implementation process and to effectively integrate monitoring and evaluation processes at the project level.

Outcome 2.1: FA resources are transferred by FNEC to CCLC for the benefit of vulnerable communities for ecosystem restoration and the development of agricultural, livestock, and aquaculture sectors

This result aims to establish a decentralized and transparent mechanism for selecting locally-led adaptation sub-projects (LLA), as well as a secure system for transferring Adaptation Fund (AF) resources to the Coastal Lagoon Community of Communes (CCLC) via the National Environment and Climate Fund (FNEC).

The selection process will be based on a call for proposals organized at the local level, led by the CCLC and supervised by the National Environment and Climate Fund (FNEC), an Accredited Entity of the AF. It will ensure inclusive access to funding by encouraging the participation of community organizations, women, youth, and people with disabilities, while ensuring compliance with the fiduciary, environmental, and social requirements of the Adaptation Fund. The CCLC will exercise the final decision-making power in the selection of sub-projects, thereby ensuring enhanced ownership at the level of the beneficiary municipalities, effective community representation, and adherence to the principles of locally-led adaptation.

To enable the CCLC to fully exercise its decision-making role, targeted capacity-building actions will be implemented upstream of the process (activities 1.2.1 and 1.2.2), thereby ensuring a rigorous, credible, and compliant selection with the principles of locally-led adaptation.

Community of Communes of Coastal Lagoons (CCLC): CCLC is a Public Establishment for Intercommunal Cooperation (EPCI) that brings together the municipalities of Abomey-Calavi, Ouidah, Kpomassè, Comé, and Grand-Popo. It was created by decree No. 2016-388 of June 30, 2016, approving its creation in accordance with the legal requirements of law No. 2009-17 of August 13, 2009, relating to intercommunality in the Republic of Benin, as revised by Code No. 2021-14 of December 20, 2021, on the Code of Territorial Administration in the Republic of Benin, and confirmed by decree No.

2012-308 of August 28, 2012, on the rules for the creation, organization, and management of Public Establishments for Intercommunal Cooperation (EPCI). Equipped with administrative and financial management autonomy, the CCLC has 37 community advisors. Its missions are as follows: (i) to ensure the protection of natural resources (water, forests, soils, fauna, hydraulic resources, groundwater, etc.), (ii) to promote socio-economic development while using natural resources rationally, (iii) to promote the preservation and enhancement of heritage, (iv) to better manage cultural and tourist assets, and (v) to foster and organize public-private partnerships.

- **Output 2.1: 02 capacity-building sessions are organized for the CCLC; 01 convention describing the fund transfer modalities is signed between FNEC and CCLC; 01 fund transfer equivalent to the planned annual amount is carried out**
- **Activity 2.1.1:** *Revision of the procedures manual. A procedures manual will be developed during the drafting phase of the full proposal and attached to the final proposal. It will clearly and harmoniously define all the procedures related to the identification, selection, financing, execution, and monitoring of LLA sub-projects. It will notably specify the technical rules, environmental and social standards, financial and accounting management systems, project call procedures, as well as monitoring, evaluation, and reporting mechanisms. This activity aims to revise the procedures manual. This revision is necessary to integrate the lessons and adjustments from the activities of component 1, particularly in terms of governance, institutional capacities, and fiduciary management. It will allow for the updating and harmonization of procedures related to the identification, selection, financing, implementation, and monitoring of LLA sub-projects, while strengthening alignment with the requirements of the Adaptation Fund. The objective is to ensure a clear operational framework, adapted to the local context and conducive to transparent, efficient, and inclusive implementation of locally-led adaptation projects.*
- **Activity 2.1.2:** *Signing of an agreement between the FNEC and the CCLC. Activity 2.1.2 aims to formalize, thru the signing of an agreement, the framework for collaboration between the FNEC, an accredited entity of the Adaptation Fund (AF), and the CCLC. This document will define the roles and responsibilities of each party, as well as the secure mechanisms for the transfer and management of FA resources at the local level. It will ensure compliance with the fiduciary, environmental, and social requirements of the Adaptation Fund and will allow the CCLC to transparently, inclusively, and effectively manage the funding of sub-projects for the benefit of vulnerable communities.*
- **Activity 2.1.3:** *Establishment of secure mechanisms for the management and transfer of FA resources to the CCLC.*
-

Outcome 2.2: The resilience of the livelihoods of vulnerable actors in the restoration of ecosystems in plant, animal, and fisheries sectors is strengthened thru the implementation of LLA initiatives funded by the Adaptation Fund

- **Output 2.2: 40 local climate change adaptation initiatives are selected, 01 annual evaluation report**
- **Activity 2.2.1:** *LLA adaptation initiatives are implemented*
- **Activity 2.2.2:** *Annual performance evaluations (APA) of LLA and CCLC adaptation initiative beneficiaries*

Component 3: Sustainability of project achievements and knowledge management

Component 3 of the project aims to ensure the sustainability of its achievements and to establish a structured system for knowledge management and applied learning. This mechanism will facilitate the adoption and replication of smart practices developed and implemented by women's and youth groups, thereby strengthening their long-term ownership.

This component plays a key role in the sustainability of essential achievements for effective management of the impacts of climate change. From this perspective, the development and

implementation of a mechanism for mobilizing sustainable financing prove essential to ensure the involvement of the private sector in investments related to climate change adaptation.

Outcome 3.1: A sustainability strategy is developed and implemented, ensuring continuity, local ownership, and the integration of project achievements into sustainable development and climate change adaptation policies, mechanisms, and practices

- **Output 3.1: 01 sustainable financing mobilization mechanism is available; Output 3.1: 01 mechanism for mobilizing sustainable financing is available; 01 public-private partnership for the sustainability of the achievements of the various funded initiatives is established**
- **Activity 3.1.1:** *Establishment of a mechanism for mobilizing sustainable financing, including the identification of innovative funding sources and the strengthening of strategic partnerships among stakeholders in the value chains of plant, animal, and fisheries sectors*
- **Activity 3.1.2:** *Support for the establishment of a public-private partnership to ensure the sustainability of the achievements of the various funded initiatives*

Outcome 3.2: Knowledge management is strengthened, and lessons learned as well as best adaptation practices are documented, capitalized, and inclusively disseminated to promote learning, replication, and scaling up of climate change adaptation actions

- **Output 3.2: 01 toolkit summarizing the best practices and successes of the funded initiatives is available; 05 exchange visits are conducted ; 05 experience-sharing workshops are organized; the FNEC digital platform disseminates practices and lessons learned from the project at the regional and national levels; 02 information dissemination systems on adaptation measures are strengthened**
- **Activity 3.2.1:** *Development of a toolkit synthesizing best practices and successes of funded initiatives*
- **Activity 3.2.2:** *Dissemination of best practices and lessons learned at the regional and national levels thru exchange visits and experience-sharing workshops and their integration on the FNEC digital platform*
- **Activity 3.2.3:** *Strengthening of information dissemination systems on adaptation measures*

The combination of these different components of the project to strengthen the climate resilience of the CCLC communes reveals an integrated and multisectoral approach, based on enhancing the technical, institutional, and financial capacities of local stakeholders. The structuring around support for agricultural, livestock, and fisheries value chains not only secures the livelihoods of vulnerable populations but also promotes adaptation rooted in territorial realities. The establishment of an operational financing window thru the FNEC is an essential lever to facilitate direct access for communities to financial resources, while ensuring a certain level of autonomy in the implementation of adaptation actions. Moreover, the strategy for sustaining achievements and proactive knowledge management ensures that the project's experiences can be capitalized on, replicated, and integrated into long-term public policies. Thus, the project lays a solid foundation for local governance resilient to climate change, by placing populations at the heart of adaptation mechanisms and supporting a sustainable transformation of production and climate risk management systems.

B – Economic, social, and environmental benefits

Describe how the project / programme provides economic, social and environmental benefits, with particular reference to the most vulnerable communities, and vulnerable groups within communities, including gender considerations. Describe how the project / programme will avoid or mitigate negative impacts, in compliance with the Environmental and Social Policy and Gender Policy of the Adaptation Fund. In particular, specify how the project/programme is addressing structural inequalities faced by women, youth, children, people with disabilities, people who are displaced, Indigenous Peoples and marginalized ethnic groups.

From an economic point of view: The climatic phenomena described above cause the degradation

of agricultural land, coastal erosion, salinization of soils and fresh water, as well as a general deterioration of living conditions. Livelihoods, particularly agriculture, fishing, and livestock farming (pillars of the local economy), are severely disrupted, exacerbating food insecurity and household vulnerability. Natural resources and essential infrastructure, such as food crops, fisheries, biodiversity, housing, roads, and basic social services, are also severely affected. In this context, adaptation becomes a structural necessity to ensure the survival of local socio-economic systems and preserve the ecological functions of the territory. Indeed, the evaluation of the economic impacts of climate-resilient livelihood strategies has shown that the Communes that have adopted them have benefited from abandoning traditional practices in a context of climate change and environmental degradation. The economic benefits vary depending on the type of climate-resilient practice.

In 2019, the floods alone caused nearly 53 billion FCFA in damages to the Beninese economy, severely affecting the agricultural, real estate, educational, and health sectors²³. These floods are also accompanied by a progressive saline intrusion that degrades agricultural land and contaminates freshwater sources, thereby compromising agricultural production and access to potable water in these coastal areas. If these impacts are not contained, they could reach up to 3% of the national GDP each year. Conversely, international examples show that one franc invested in adaptation can generate up to five francs in avoided benefits. According to the World Bank and the IMF, every dollar spent on climate adaptation can generate public savings representing between 2.3% and 4.6% of annual GDP by 2100.

The implementation of the climate resilience project in the CCLC communes thus represents an essential economic and strategic lever to mitigate these growing losses and build a sustainable development trajectory. The project will equip the municipalities with resilient infrastructure and drainage systems, while also strengthening food security, rural incomes, and regional economic growth. Ultimately, this investment will help preserve employment, stabilize household incomes, attract private investment, and limit economic losses, which, without action, could reach 19% of the national GDP by 2050. It will also strengthen the country's macroeconomic resilience by reducing dependence on emergency aid mechanisms, while consolidating fiscal sustainability and social cohesion at the territorial level. Indeed, dependence on emergency aid mechanisms poses a major challenge in terms of economic and institutional viability. Although necessary, these post-disaster interventions are costly, unpredictable, and mobilize budgetary resources that could be allocated to development. They also create structural vulnerability by encouraging communities to adopt a reactive rather than a preventive approach. The project, by investing in resilient infrastructure and local prevention capacities, will significantly reduce the need for such emergency aid. This preventive approach promotes the strengthening of local capacities and community ownership of solutions, thereby ensuring long-term resilience rather than cyclical dependence on external assistance.

The integration of climate services into local value chains will strengthen the adaptive capacities of economic actors throughout the production, processing, and marketing cycle. Access to reliable forecasts and targeted training will not only reduce post-harvest losses and maximize periods of activity but also diversify household income sources. This dynamism will directly benefit small businesses, particularly those owned by women, by providing them with a more regular supply and better sales planning. Moreover, the increased stability of agricultural and fisheries incomes will promote local investment, the creation of decent jobs, and the development of new rural markets. By supporting the structuring of value chains and the sustainable enhancement of resources, the project will thus help transform local economies into hubs of resilience and sustainable economic opportunities. At the territorial level, this economic dynamic will promote inclusive growth, supported by a diversified productive base that is less vulnerable to climate shocks. It will also facilitate the mobilization of additional public and private financing, further justifying the Adaptation Fund's commitment to integrated approaches focused on climate and socio-economic returns on investment.

From a social perspective: this project will generate significant social benefits by strengthening

²³ *National Disaster Risk Reduction Strategy (2019-2030)*

community cohesion, reducing social inequalities, and improving the living conditions of vulnerable groups. By prioritizing women, youth, the elderly, and people with disabilities, the project adopts an inclusive approach that ensures an equitable distribution of benefits. Increased access to climate services, resilient technologies, sustainable energy, and training allows these groups to better cope with climate hazards while improving their economic autonomy and social participation. It will also help reduce male economic migration, an increasingly marked phenomenon in coastal areas where growing land infertility due to saline intrusion and the depletion of lagoon resources force men to leave their homes to find income elsewhere. This forced mobility weakens family cohesion, overburdens women with domestic and productive responsibilities, and deprives children of paternal presence. By restoring soil fertility, securing fishing activities, and diversifying local economic opportunities, the project will enable men to maintain viable productive activities alongside their families, thereby strengthening household stability and the balanced distribution of family roles. Securing vegetable, fishing, and processing activities (often carried out by women) directly contributes to household income stability, poverty reduction, and improved food security. Moreover, the reduction of flood-related risks decreases forced displacements, housing losses, and school interruptions, thereby preserving the local social fabric.

The project further strengthens human capital thru continuous training of local stakeholders in adaptation practices, sustainable natural resource management, and green entrepreneurship. By integrating them into risk management committees and ecological restoration activities (mangroves, watersheds, community forests), the project promotes their civic engagement and professional integration. These social dynamics are strengthened by the creation of local green jobs, the networking of producers, and the improvement of participatory governance. In the long term, the project will help strengthen intergenerational solidarity, reduce tensions related to access to resources, and promote a fairer development model, where populations are both beneficiaries and actors in the resilience of their territory.

- **Gender evaluation**

The gender assessment and action plan are part of Benin's national policies on gender equality and climate change challenges, including the National Gender Promotion Policy (PNPG) and Benin's Action Plan for Gender and Climate Change (PAGCCB) covering the period 2023-2025. Women make up 50.21% of Benin's population, the majority of whom are active in agriculture (54.8%), while 17.24% are children under the age of five. Furthermore, young people (aged 15-35) represent around 35% of the population, with a particularly high unemployment rate among young rural women. People with disabilities, estimated at around 1.6% of the population according to the RGPH4, face multidimensional exclusion that exacerbates their vulnerability to climate shocks. Women play a leading role in managing subsistence farming activities, collecting water, and administering domestic resources, which increases their vulnerability to the impacts of climate change such as droughts and floods. These risks are exacerbated by their limited access to productive tools and adaptation mechanisms. The floods in 2019 destroyed 4,899.1 hectares of crops, with particularly severe consequences for women farmers, who are responsible for 70% of food production. At the same time, rural poverty, which affects 40.6% of the population, has a greater impact on female heads of household, young people without qualifications, and people with disabilities, who lack the means to cope with the adverse effects of climate change. Despite national initiatives to establish gender equality, women, young people, and people with disabilities remain largely marginalized in local decision-making bodies, where their participation remains virtually non-existent. This exclusion is mainly due to deeply entrenched sociocultural and religious norms, which confine them to domestic roles and hinder their political and economic advancement. In 2024-2025, progress has been noted at the national level, but discrimination persists, with 76% of Beninese people believing that violence against women and girls is not common in their community, while initiatives such as UN Resolution 1325 and empowerment programs aim to strengthen their leadership. However, the near-total invisibility of people with disabilities in local public policies remains a major challenge. This project aims to integrate gender considerations to ensure that marginalized and vulnerable groups, particularly women and people with disabilities, have better access to reliable climate information. This will help them to better manage risks, while promoting their

economic autonomy. The ultimate goal is to contribute to more inclusive and sustainable development that benefits all communities.

The municipalities of the CCLC involved in this program, notably Abomey-Calavi, Ouidah, Kpomassè, Comé, and Grand-Popo, are distinguished by specific socioeconomic characteristics. Consultations with stakeholders and an assessment based on municipal development plans have highlighted socio-cultural and religious barriers that significantly limit the role of women. These constraints confine them to the domestic sphere and perpetuate their subordination to men, resulting in the virtual absence of women in local decision-making bodies.

- **Abomey-Calavi**

The municipality of Abomey-Calavi is experiencing sustained population growth, reaching 1,253,000 inhabitants in 2023, representing an increase of 5.38% over the previous year²⁴. In 2022, the composition of the population revealed near gender parity, with women constituting 50.7% of the total. Despite their notable presence in senior administrative positions (categories A to C), women remain significantly underrepresented in decision-making roles, occupying only 10% of seats on the municipal council. Economically, women dominate the informal sector, often taking on tasks that are less valued by men. To support their economic empowerment, municipal microcredit programs target vulnerable groups and small-scale income-generating activities. However, gender-based violence remains a widespread problem, taking various forms: physical, sexual, economic, psychological, or related to property and assets. Young girls are particularly vulnerable to risks such as early or forced marriage and sexual assault, including rape of minors. In April 2023, of the 916 cases of violence handled, 82.6% involved women, with all cases of sexual violence directed against them²⁵.

- **Ouidah**

Women represent 51.5% of the population in Ouidah. However, only one woman among the 77 elected representatives sits on the municipal council, reflecting a widespread reluctance among women to take on positions of responsibility. The municipality faces many challenges, including underfunded social services, persistent gender-based violence, child abuse, and the exclusion of people with disabilities. In 2023, 165 cases of abuse, violence, and exploitation affecting vulnerable populations were reported. Youth unemployment remains a major problem, exacerbated by a lack of training, financial support, and gaps in public policy. Faced with these challenges, the municipality is working to encourage the participation of women and young people in local governance, while supporting women's income-generating groups through awareness campaigns and targeted technical assistance.

This initial assessment of the situation of women and girls is based on a documentary analysis of the municipal development plans of the 12 municipalities concerned, supplemented by data from the DHS and MICS surveys conducted in Benin, as well as consultations with stakeholders. It paints an alarming picture: in all the municipalities studied, different categories of marginalized and vulnerable people face increased risks due to social, economic, and structural inequalities. These include children under the age of five, orphans, and young people exposed to illegal work, child trafficking, early or forced marriage, and life on the streets. Women and girls also face significant threats, such as gender-based violence, early pregnancy, and harmful traditional practices such as female genital mutilation.

Older people, especially those living in rural areas or involved in the informal sector without a social safety net, often face exclusion and poverty. People with disabilities, whether physical, intellectual, or mental, are frequently marginalized due to limited access to adapted infrastructure, medical care, education, or employment. People with disabilities remain invisible in municipal policies. Other vulnerable populations include those deprived of access to communication tools, victims of natural disasters, or those living in extreme poverty. Many of them are illiterate and have limited access to climate information, economic opportunities, emergency aid, and adequate social services.

²⁴ Abomey-Calavi Town Hall (2023). Municipal Development Plan 2023-2027 – PDC4. CREDD-Benin Sarl.

²⁵ Abomey-Calavi Town Hall (2023). Municipal Development Plan 2023-2027 – PDC4. CREDD-Benin Sarl.

- **Kpomassè**

Gender parity remains low in the municipality of Kpomassè, where women are significantly underrepresented in governance bodies: no women are members of the municipal council, and municipal services employ only two women out of a total of 12 employees. This situation is marked by several structural weaknesses, such as the weight of tradition, low levels of education among women, and a lack of solidarity among them, thus limiting their involvement in civic life. In the agricultural sector, women make up 17.5% of the working population (1,013 out of 5,778 workers according to 2013 figures), making an essential contribution to market gardening and product processing. However, their access to fertile land and agricultural inputs is limited, which accentuates their economic marginalization. In the field of education, the imbalance is also striking. The number of female teachers remains low and the school dropout rate for girls, estimated at 22.33% between 2012 and 2016, is mainly attributed to socio-cultural and economic constraints. The Communal Development Plan (PDC) highlights gender-based violence as an alarming problem. Similarly, the situation of young people in the commune is particularly worrying, with a massive rural exodus to Cotonou and urban areas due to the lack of local economic opportunities and the degradation of lagoon and agricultural resources. Young farmers, deprived of access to land and inputs, are struggling to modernize their practices and adapt to climate change. People with disabilities suffer from systematic exclusion: lack of adapted infrastructure, no representation in municipal services (0 out of 12 employees), and marginalization in socio-economic development programs. Their vulnerability is exacerbated by the lack of specialized services (orthopedics, rehabilitation) and by cultural barriers that confine them to social invisibility.

- **Comè**

Women and girls continue to be perceived as marginalized in gender relations, despite development efforts whose impact on gender dynamics remains largely invisible. Their role remains largely confined to subordinate domestic and socio-economic spheres, particularly through household tasks that reduce their availability for public activities. Gender-based violence also persists. At the same time, control over income remains largely in the hands of men. Women's participation in local governance bodies is extremely low: there are no women among the 15 members of the municipal council, only two out of 12 in the town hall services, and none among the 12 in the decentralized state services²⁶. Their access to productive resources, particularly fertile land, is also limited, which intensifies their economic marginalization. In secondary education, women represent barely 11.5% of the teaching staff, with only 106 female teachers out of a total of 921. The low literacy rate among women contributes to a widespread lack of interest in this sector, exacerbated by an average school dropout rate of 22.33% between 2012 and 2016. To remedy this situation, the Beninese government has committed to promoting women's education within the framework of the PRSP. Furthermore, gender-based violence remains a worrying factor in this marginalization. In 2016, the NGO CERADID recorded 189 cases of women and girls who were victims and received medical, food, and legal assistance. The roots of this violence include women's low level of education, the weight of sociocultural traditions, and a lack of self-confidence and solidarity among women. Young people in the municipality, faced with high unemployment and the depletion of fishery resources (lagoon), are forced to migrate seasonally or permanently, thereby weakening the local social and economic fabric²⁷. People with disabilities are virtually absent from municipal statistics and programs. This invisibility reflects deep marginalization, fueled by stigma, inaccessible infrastructure, and a lack of inclusive policies. In the face of recurring floods, these individuals are the group most at risk due to their reduced mobility.

- **Grand-Popo**

Gender-related challenges in the municipality of Grand-Popo are manifested in the persistent marginalization of women and girls despite their key economic role. Women dominate trade (60% of traders) and fish processing (100% of fishmongers), but their access to land, inheritance, and decision-making bodies remains limited by customary traditions. Gender parity is low, with only 13.7% of women

²⁶ Comè town hall. (2017). Comè municipal development plan (2018-2022): Final version.

²⁷ Comè town hall. (2017). Comè municipal development plan (2018-2022): Final version.

participating in public consultations and 12.56% of those affected by projects, reflecting their underrepresentation in governance structures²⁸. Girls have equal access to primary education, but their secondary school enrollment rate drops to 83.41% compared to 96.07% for boys, due to family preferences in rural areas. Women's vulnerability is accentuated, representing 80.49% of vulnerable cases (33 out of 41), particularly widows and the elderly, with increased risks of gender-based violence and sexual exploitation linked to the influx of workers²⁹. Weaknesses such as male domination have been identified in the municipality, as well as opportunities through projects such as WACA, which aims for 60% inclusion of women, and the 2025 ANCB workshop on gender equality. However, climate change and cultural constraints remain major threats, requiring increased mobilization to promote gender parity and reduce the marginalization of women and girls in the municipality of Grand-Popo. The situation of young people in the municipality is marked by endemic unemployment, particularly among young women, and dependence on precarious economic activities (artisanal fishing, informal trade) that are heavily impacted by coastal erosion and the degradation of marine resources. Their exclusion from decision-making bodies limits their ability to influence local development policies. People with disabilities, although not quantified in municipal statistics, are among the most vulnerable to coastal risks and flooding. The inaccessibility of public infrastructure, the lack of specialized services, and social stigma place them in a situation of extreme exclusion, exacerbated by their total absence from climate resilience programs.

From an environmental perspective: The project will promote sustainable and inclusive management of natural resources by integrating agroecological practices, integrated water management, and effective early warning systems tailored to local conditions. These measures will limit soil degradation, restore degraded ecosystems (wetlands, mangroves, agricultural land), and enhance natural regeneration. The project will also pay particular attention to the protection and enhancement of protected areas in the coastal zone, including Ramsar sites, biosphere reserves, and wetlands of ecological importance. The restoration of coastal and lagoon ecosystems, combined with improved management of these areas, will create an environment conducive to the development of sustainable and responsible ecotourism. This emerging sector will offer new economic opportunities to local communities through biodiversity observation, community-based tourism, and the promotion of cultural and natural heritage, while generating additional income that will reduce pressure on natural resources. The preservation of these areas will also contribute to the maintenance of essential ecosystem services (fish nurseries, hydrological regulation, carbon sequestration), on which local productive activities depend. Women, who are often at the forefront of managing domestic resources, will see their workload reduced thanks to improved availability and accessibility of essential resources such as water and wood, while also being integrated into local environmental governance. Men, as major players in fishing, agriculture, and livestock farming, will benefit from sustainable practices that will ensure the long-term productivity of their activities while preserving ecosystems. Young people, trained in climate issues and green innovation, will become agents of change by engaging in initiatives such as sustainable agriculture, reforestation, and renewable energy. By promoting the equitable participation of all social groups, the project will help reduce climate vulnerability, ensure shared and efficient management of natural resources, and create a sustainable balance between economic development and environmental conservation. This strengthened ecological framework will also increase the resilience of territories to future shocks and generate medium- and long-term climate co-benefits, contributing to national determined contribution (NDC) targets.

C – Cost-effectiveness analysis of the project

Describe or provide an analysis of the cost-effectiveness of the proposed project / programme., focusing on the implementation and execution arrangements, in particular the mechanism which will provide more direct access to finance.

This project was designed with a view to socio-economic profitability, budgetary efficiency, and sustainable territorial impact. For an estimated population of around one million direct beneficiaries, the

²⁸ Grand-Popo Town Hall (2018). Grand-Popo Municipal Development Plan (PDC 3) (2019-2023)

²⁹ Grand-Popo Town Hall (2018). Grand-Popo Municipal Development Plan (PDC 3) (2019-2023)

cost per capita is moderate in relation to the expected benefits, with a particularly favorable cost-effectiveness ratio. By strengthening the technical and organizational capacities of actors in the plant, animal, and fisheries value chains, the project promotes the emergence of autonomous, sustainable adaptation initiatives that are directly rooted in local realities. These interventions will lead to a measurable improvement in agricultural and fisheries yields, a reduction in post-harvest losses, better use of natural resources (wood energy, market garden products, agricultural by-products), and diversification of income sources. In addition, there will be multiplier effects such as maintaining the workforce through improved food and health security, and support for local entrepreneurship (particularly among women), which will boost the economies of the targeted communities. Reducing the economic losses caused by flooding will also lead to a net increase in the investment capacity of local communities by reducing their dependence on emergency funding.

At the same time, the project strengthens the capacity of local and decentralized institutions to plan, supervise, and support the development of climate-resilient value chains, thereby consolidating territorial and sectoral governance of adaptation. The modernization of the meteorological system and the equitable provision of climate services will promote better risk anticipation, limiting the costs associated with production losses, emergency response, and reconstruction. This integrated framework will support a transition to sustainable and inclusive resource management, in line with Benin's national adaptation policies and Nationally Determined Contributions (NDCs). At the regional level, the restoration of coastal ecosystems, the expansion of forested areas, and the preservation of biodiversity will generate wide-ranging environmental benefits. Over a 10- to 15-year horizon, the combined effect of direct economic gains (increased productivity, reduced losses), public savings (reduced post-disaster expenditure), and positive environmental impacts should lead to a cost-benefit ratio of more than 2.5, positioning the project as a strategic, transformative investment that meets the criteria of the Adaptation Fund.

D –Alignment of the project with national or local sustainable development strategies

*Describe how the project / programme is consistent with national, **sub-national and local** sustainable development strategies, including, where appropriate, national adaptation plan (NAP), national, **sub-national or local development plans**, poverty reduction strategies, national communications, or national adaptation programs of action, or other relevant instruments, where they exist.*

The program for “climate change resilience among vulnerable populations in the Community of Coastal Lagoons of Benin (PRCC-CCLC)” is part of an integrated territorial development approach that is fully consistent with national and local strategies to combat climate change in Benin. This program specifically aims to strengthen the adaptive capacity of the most vulnerable communities facing climate hazards in the Coastal Lagoons region.

This initiative is strategically aligned with the various national planning frameworks for climate risk management, environmental adaptation, and community resilience development, thus constituting a major lever for the implementation of Benin's public policies in this area. The table Among these policy strategy and action plan documents, we note:

Table 3 : Alignment of the project with national or local sustainable development strategies

National strategies/plans/policies	Alignment of the project with the objectives of Benin's framework documents
The National Development Plan (PND 2018-2025)	The Climate Change Resilience Program for Vulnerable Populations in the Community of Coastal Lagoons of Benin (PRCC-CCLC) is aligned with several objectives and strategic orientations of the National Development Plan (PND 2018-2025), particularly strategic axis 4 in the area of sustainable environmental management and adaptation to climate change. The PND emphasizes the importance of strengthening the resilience of populations to the effects of climate change and natural disasters (Page 20, paragraphs: 11-14 and page 115, paragraph: 316). The PRCC-CCLC directly addresses this objective by targeting vulnerable populations in coastal areas, which are often exposed to flooding and ecosystem degradation. The PND also mentions the need to protect and enhance natural resources (Page 26, paragraph 32), which corresponds to the PRCC-CCLC's actions for the preservation of lagoons and coastal ecosystems.
Benin's National Climate Change Adaptation Plan (PNA 2022-2030)	Benin's NAP is the country's roadmap for adapting to the effects of climate change. This plan identifies the most vulnerable sectors, including agriculture, water resources, energy, health, tourism, forestry, infrastructure and urban development, and the coastline (page 24, point 3.2.1), and proposes adaptation strategies for each sector (pages 75-94, tables 13 to 21). The PRCC-CCLC directly targets the populations of coastal lagoons, an area identified by the NAP as one of the most vulnerable to climate change. According to the NAP, this region is highly exposed to coastal erosion, sea level rise, flooding, and land salinization, affecting fishermen, market gardeners, and farmers in particular. Therefore, the NAP specifically aims to "reduce vulnerability to the impacts of climate change by strengthening the adaptive capacity and resilience of local communities and their livelihoods," as described in the executive summary (page vii). The PRCC-CCLC is fully in line with this approach by proposing local adaptation measures for vulnerable communities in the area covered by the CCLC. Finally, the PRCC-CCLC is aligned with the three strategic orientations of the NAP, namely sustainable consumption and production patterns, sustainable management of natural resources and ecosystems, and the establishment of natural disaster management systems, particularly against coastal erosion and flooding (page 68, Table 11). These orientations are consistent with the concrete actions of the PRCC-CCLC, such as: reforestation of the coastal strip, restoration of mangroves, and protection against saltwater intrusion and loss of agricultural land.
Action Plan on Gender and Climate Change	The project to strengthen the resilience of vulnerable populations in the Community of Coastal Lagoons to climate change is fully aligned with the vision of Benin's Gender and Climate Change Action Plan (PAGCCB) 2023-2025, which aims to "promote the effective integration of gender in the implementation of climate change mitigation and adaptation measures in a manner that is equitable for men, women, and vulnerable people" (pages 16, 43). By targeting the most vulnerable populations in the coastal lagoons, strengthening their adaptive capacities in the priority sectors identified by the national plan, and adopting a decentralized approach in line with the planned institutional framework, the project contributes directly to the operational implementation of the PAGCCB and the strategic objectives of Benin's National Climate Change Management Policy.
Benin's Nationally Determined Contribution (NDC) under the Paris Agreement	The Climate Change Resilience Program for Vulnerable Populations in the Community of Coastal Lagoons of Benin (PRCC-CCLC) is in line with Benin's updated Nationally Determined Contribution (NDC), which emphasizes adaptation in vulnerable coastal areas. Indeed, the NDC identifies the Beninese coastline as an area highly vulnerable to the effects of climate change, such as flooding, sea level rise, and land salinization (pages 9 and 25). In this context, the PRCC-CCLC aims to implement tangible actions such as coastal ecosystem restoration, community capacity building, and the promotion of resilient agriculture, which are directly in line with the sectoral adaptation objectives defined in the NDC (pages 25-26). More specifically, it is integrated into the strategies planned for the coastal sector (page 33, Table 13), particularly in terms of ecosystem adaptation, shoreline protection, and relocation of at-risk populations. This program thus constitutes a clear contribution to the local implementation of national adaptation commitments.
Strategic Development Plan for the Agricultural Sector (PSDSA): Strategic Guidelines 2025 National Plan for Agricultural Investment and Food and Nutritional Security (PNIASAN) 2017-2021	The Climate Change Resilience Program for Vulnerable Populations in the Community of Coastal Lagoons of Benin (PRCC-CCLC) is aligned with Axis 3 of the National Plan for Agricultural Investment and Food and Nutritional Security (PNIASAN), which aims to strengthen the resilience of agricultural populations to the effects of climate change. This strategic axis focuses on promoting climate-smart agriculture, sustainable land and aquatic ecosystem management, securing land tenure, and improving food and nutrition security for vulnerable populations (page 35, action 3.1.1). The PRCC-CCLC addresses these priorities through clear actions such as restoring coastal ecosystems, developing resilient agriculture, and strengthening the capacities of local communities. In addition, the program aims to promote the adoption of agricultural innovations adapted to changing climatic conditions, such as the identification and selection of the best varieties/species according to agro-ecological zones (actions 3.1.2) and the dissemination and support for the implementation of production systems that limit greenhouse gas emissions and promote organic and ecological agriculture (action 3.1.3) of the PSDSA. This includes the selection of agricultural varieties that are resilient to droughts and floods, the dissemination of low greenhouse gas emission production techniques, and the promotion of ecological and organic agricultural practices. These interventions make the PRCC-CCLC an operational tool for implementing the PSDSA/PNIASAN in the municipalities that make up the CCLC, a coastal area.

National strategies/plans/policies	Alignment of the project with the objectives of Benin's framework documents
<p>National Strategy for Disaster Risk Reduction (2019-2030)</p>	<p>The PRCC-CCLC aligns with Strategic Axis 3 of the National Strategy for Disaster Risk Reduction (SNRRC), which aims to strengthen investments in economic, social, and environmental resilience. It encourages sustainable economic activities and responsible management of natural resources in line with the SNRRC guidelines (page 89). The program implements initiatives such as mangrove protection and integrated coastal zone management that directly address the SNRRC's priority actions for combating coastal erosion (pages 65-66). By targeting risks related to sea level rise and flooding, it also aligns with the priorities for coastal zone protection and hydrometeorological risk management defined on pages 33 and 34 of the SNRRC. Finally, the reforestation and coastal ecosystem restoration activities implemented under the PRCC-CCLC contribute to disaster impact mitigation in line with the measures recommended by the SNRRC (page 65). These actions contribute to both environmental protection and the socio-economic resilience of vulnerable communities.</p>
<p>Multi-sector investment plan for adaptation to coastal risks in the face of climate change in Benin (PMIS)</p>	<p>The Climate Change Resilience Program for Vulnerable Populations in the Community of Coastal Lagoons of Benin (PRCC-CCLC) is part of the Multisectoral Investment Plan for Adaptation to Coastal Risks in the Face of Climate Change in Benin (PMIS). This consistency is particularly evident in their shared objectives of reducing coastal risks. The PRCC-CCLC aims to strengthen the resilience of vulnerable populations to climate change, which is in line with the overall objective of the Multisectoral Investment Plan to "reduce coastal risks threatening the coastline" (page 6, executive summary). The Plan also explicitly mentions the need to "reduce the rate of erosion by 30% at the most critical erosion points" and to "reduce flood risks for 30% of the population living in these priority flood zones" (page 6). The PRCC-CCLC has also set quantifiable targets for reducing erosion and flood risks. Similarly, the PMIS highlights "hot spots requiring urgent treatment," such as the Hillacondji area (pages 32-34), where the PRCC-CCLC could intervene to protect populations and infrastructure. The risks of erosion and flooding in coastal municipalities (pages 44, Table 4.1) are directly affected by the actions of the PRCC-CCLC.</p>
<p>Decree No. 2024-859 of March 27, 2024 approving the National Contingency Plan of the Republic of Benin (PNC)</p>	<p>The National Contingency Plan identified climate hazards, particularly coastal flooding and the socio-economic vulnerability of populations. The PRCC-CCLC explicitly targeted the effects of climate change that correspond to those identified by the NCP. Among the major risks identified by the NCP are floods, which are considered one of the most likely and devastating hazards (page 4, section 2.1 of Decree No. 2024-859 of March 27, 2024). Floods are classified among the three main hazards identified for the national plan, with a severe impact requiring significant additional resources (page 5, risk summary). The program also targets vulnerable coastal populations, which is in line with the PNC's approach of targeting the groups most exposed to hazards. For example, the measures planned for flood zones include the relocation of populations and the provision of food, drinking water, and temporary shelters (page 11, table of exposed populations by municipality). Thus, the PRCC-CCLC directly responds to the priorities of the PNC by strengthening the resilience of coastal areas to these critical climate threats.</p>
<p>Government Action Program (GAP 2021-2026)</p>	<p>The PRCC-CCLC is fully in line with the strategic orientations of the Government Action Program (PAG 2021-2026), particularly Pillar 3, which aims to sustainably increase the social well-being of the population, and Strategic Axis 7, which is dedicated to strengthening the balanced and sustainable development of the national territory. The PAG provides for actions to strengthen resilience to climate change, which directly corresponds to the objective of the PRCC-CCLC. The program contributes to the preservation of natural resources and the adaptation of vulnerable populations, in line with the government's priorities. The PAG mentions the need to improve the living environment, particularly in urban and peri-urban areas, and to promote sustainable local development. By targeting coastal lagoons, the PRCC-CCLC aligns with this vision by proposing solutions for vulnerable areas. The PAG includes a coastal protection program, which is a key objective of the PRCC-CCLC. The two initiatives share a common approach to combating the effects of climate change on coastal areas (pages 53, 56, and 60 of the PAG overview document).</p>
<p>The National Health Policy (PNS 2018-2030)</p>	<p>The CCLC's Climate Change Resilience Program for Vulnerable Populations is fully aligned with the National Health Policy (NHP) 2018-2030. The NHP recognizes climate change as a major determinant of health, particularly through rising temperatures, sea level rise, and irregular rainfall (page 13). In response, the PRCC-CCLC aims to reduce the health risks associated with these factors by improving access to safe drinking water, sanitation, and prevention of climate-sensitive diseases. It will also contribute to the development of climate-resilient health infrastructure in accordance with Strategic Guideline 4 of the PNS (pages 24-25). The program supports the resilience of the health system by strengthening community capacities to anticipate and respond to disasters, as recommended by the PNS on page 19. In addition, its decentralized and participatory approach is consistent with the principles of local governance advocated by the PNS (page 22). Thus, the PRCC-CCLC is aligned with the operationalization of the PNS in vulnerable coastal areas.</p>

National strategies/plans/policies	Alignment of the project with the objectives of Benin's framework documents
<p>The National Health Development Plan (PNDS 2018-2022)</p>	<p>The National Health Development Plan (PNDS) 2018-2022 incorporates climate change as a determining factor in public health by identifying its impacts on waterborne and vector-borne diseases and malnutrition (page 26). It therefore recommends the development of climate-compatible health infrastructure and the securing of health facilities in at-risk areas (pages 38-39). In line with these guidelines, the PRCC-CCLC, which aims to strengthen the resilience of coastal populations by combating the health impacts of climate change, can also support the construction or rehabilitation of health infrastructure that is resistant to flooding and other climate hazards. The program will contribute to the fight against climate-sensitive diseases by improving access to drinking water and sanitation, thereby reducing the risk of cholera and other diarrheal infections, as outlined in the PNDS on pages 19 and 20.</p>
<p>The National Water Policy (NWP)</p>	<p>The CCLC Climate Change Resilience Program for Vulnerable Populations aligns with Benin's National Water Policy (PNE). The PRCC-CCLC aims to integrate climate variability into water management by protecting coastal populations from flooding and salinization in accordance with the PNE (page 18). The program also supports the conservation of aquatic ecosystems, particularly lagoons and wetlands, in line with the PNE guidelines (pages 49-50). It will help improve access to drinking water and sanitation in coastal communities in accordance with the objectives set by the PNE (page 38). By applying the principles of Integrated Water Resources Management (IWRM) with the participation of local stakeholders, it is in line with the recommended governance approach (pages 20 and 26-28). Finally, the PRCC-CCLC will strengthen the capacity of local authorities to manage water resources sustainably in support of the decentralization described on pages 25 and 41 of the PNE.</p>
<p>The National Action Plan for Integrated Water Resources Management (PANGIRE 2023-2025)</p>	<p>The CCLC's Climate Change Resilience Program for Vulnerable Populations is fully aligned with the National Action Plan for Integrated Water Resources Management (PANGIRE) - Phase 3 (2023-2025). It contributes to several specific objectives of the plan, including sustainable watershed management, monitoring of water resources and risks, and resource mobilization using an IWRM approach (pages 36 to 41). Operating in vulnerable coastal areas such as the Ouémé Delta, the program responds to the geographical priorities of PANGIRE (page 26) while strengthening local governance through municipal platforms. It thus constitutes an effective local lever for the participatory implementation of PANGIRE's objectives.</p>
<p>The Sustainable Development Goals (SDGs)</p>	<p>The Climate Change Resilience Program for Vulnerable Populations in the Community of Coastal Lagoons of Benin (PRCC-CCLC) is fully aligned with several Sustainable Development Goals, including SDG 13 (climate action), SDG 11 (sustainable cities and communities), SDG 1 (no poverty), and SDG 10 (reduced inequalities) by strengthening the resilience of vulnerable populations to climate impacts in Benin's coastal areas. The program also contributes to protecting ecosystems (SDG 15) and strengthening partnerships (SDG 17), thus creating an integrated framework for action that addresses the environmental, social, and economic challenges facing Benin's coastal communities.</p>

E – National technical standards and environmental and social policy

Describe how the project / programme meets relevant national technical standards, where applicable, such as standards for environmental assessment, building codes, etc., and complies with the Environmental and Social Policy of the Adaptation Fund. Also describe, as needed, how the project/programme will provide support to local actors and build their capacities to comply with the standards

The Climate Change Resilience Program for Vulnerable Populations in the Community of Coastal Lagoons of Benin (PRCC-CCLC) is fully aligned with the environmental and social policy defined by the Adaptation Fund (AF) and with the environmental and social regulations in force in Benin. A review of national legislation, in particular Framework Law No. 98-030 of February 12, 1999, on the environment, as well as the principles and criteria adopted by the Adaptation Fund, demonstrates perfect consistency between the national categorization and that advocated by the Fund. Feasibility studies and assessments will further this alignment by highlighting the relevant national environmental standards and the compliance modalities of the various projects that will be developed to meet these requirements. These studies will also specify the process for developing an environmental and social management plan in accordance with national standards and the standards established by the Adaptation Fund in this area. Control mechanisms will be put in place to ensure that projects do not contribute to increasing inequalities, do not have any adverse effects on marginalized populations, and do not harm the environment. The main applicable national laws and regulations are as follows:

The table below presents the main national laws and regulations as well as the Adaptation Fund

standards applicable to the project:

Table 4 : Main national laws and regulations as well as the Adaptation Fund standards applicable

Legal text	Relevance to the project
Environmental framework	
Law No. 98-030 of February 12, 1999 establishing a framework law on the environment	Obligation to assess and manage the environmental and social impacts of subprojects; legal framework of reference for all interventions
Decree No. 2017-332 of July 6, 2017 on the Environmental Impact Assessment procedure	Defines the environmental assessment procedure applicable to project activities
Climate change	
Law No. 2018-18 of August 6, 2018 on climate change	Specific legal framework for climate adaptation actions; legalizes the project's intervention in the context of climate change
Coastal zone	
Law No. 2018-10 of July 2, 2018 on the coastal zone management	Protection, development and enhancement of the coastal zone in the Republic of Benin
Local governance	
Law No. 2021-14 of December 20, 2021 on the territorial administration code	Defines the institutional framework for implementation at the community level; legitimizes the inter-community approach of the project.
Law No. 97-029 of January 15, 1999 on the organization of municipalities	Institutional anchoring of actions at the level of member municipalities of the Coastal Lagoons Community
Land	
Law No. 2013-01 of January 14, 2013, on the Land and Property Code, amended by Law No. 2017-15	Guarantees secure land tenure for beneficiaries, particularly women; provides a framework for potential land acquisitions and compensation mechanisms.
Public health	
Law No. 87-015 of September 21, 1987 establishing the Public Health Code	Prevention of health risks related to climate hazards; hygiene standards for infrastructure
Water resources	
Law No. 2010-44 of October 21, 2010 on water management	Oversees interventions related to water management; protection of aquatic ecosystems in coastal lagoons.
Gender and protection of vulnerable persons	
Law No. 2011-26 of January 9, 2011 on the prevention and punishment of violence against women	Integration of gender issues; protection of female beneficiaries against all forms of violence within the framework of the project
Law No. 2017-06 of September 29, 2017 on the protection and promotion of the rights of persons with disabilities	Ensures the effective inclusion of persons with disabilities among beneficiaries; accessibility of infrastructure and services
Work and social protection	
Loi n° 98-004 du 27 janvier 1998 portant Code du Travail	Regulates working conditions in income-generating activities; protects workers on construction sites and in project activities.
Natural resources	
Law No. 93-009 of July 2, 1993, on forest management	Protection of coastal forest ecosystems; supervision of reforestation and ecological restoration activities
Law No. 2014-19 of August 7, 2014 on the Fisheries and Aquaculture Code	Regulation of fishing and aquaculture activities; protection of lagoon resources on which coastal communities depend
Agriculture and food security	
Law No. 2022-14 of July 9, 2022 on agricultural policy, food security, and nutrition	Framework for climate-resilient agricultural activities; promoting food security for vulnerable populations
Risk and disaster management	
Decree No. 2023-334 of June 21, 2023, on measures and procedures for disaster risk reduction, health emergencies, and civil protection	Operational framework for climate disaster risk reduction activities; warning and response mechanisms

Legal text	Relevance to the project
Adaptation Fund Standards	
Environmental and Social Policy of the Adaptation Fund (2016, revised 2021)	International compliance framework; ensures that the project complies with international standards on human rights and social protection
Environmental and Social Principles and Criteria (ESP) of the FA	Specific standards for assessing and managing environmental and social risks applicable to the project
Gender Policy of the Adaptation Fund (2016)	Requirement to incorporate a transformative gender approach; alignment with Benin's PAGCCB
FA Risk Categorization Standards	Determines the level of environmental and social assessment required and the appropriate management mechanisms
FA Complaints Management Mechanism	Requirement to establish a complaint management mechanism at the project level, in accordance with FA standards

F – Duplication

Describe if there is duplication of project / programme with other funding sources, if any. Describe how the project/programme will ensure coordination of different initiatives, sub-projects and small grants towards a common goal, enhances collaboration across sectors and outlines how activities avoid duplication and enhance efficiencies and good practice

The implementation of the Climate Change Resilience Project for Vulnerable Populations in the Community of Coastal Lagoons of Benin (PRCC CCLC) is part of a coherent territorial dynamic that complements existing climate, planning, and development initiatives. Unlike other projects that are predominantly institutional or infrastructural in nature, the PRCC CCLC adopts an integrated approach focused on livelihoods, ecosystem restoration, and community resilience. It takes concrete action to address the specific vulnerabilities of the most exposed groups (women, young people, small-scale producers, people with disabilities) by securing their economic activities in the face of climate hazards, promoting agricultural by-products in a circular economy approach, and improving yields through climate-smart practices. This locally-based approach makes it possible to meet needs that are still insufficiently covered, by strengthening food security, sustainable incomes, and social cohesion, while promoting the continuity and sustainability of the achievements of previous projects.

At the institutional level, the PRCC CCLC consolidates the territorial planning and environmental governance efforts already undertaken in the CCLC member municipalities, in line with the national priorities expressed in the Nationally Determined Contribution (NDC), the National Development Plan, and the National Land Use Plan. The project operationalizes climate adaptation at the local level through the integration of climate services, the restoration of coastal ecosystems, and participatory risk management, thereby helping to strengthen inter-municipal coordination and anchor results over the long term.

The PRCC CCLC maintains strategic complementarity with the LoCAL mechanism currently being implemented in Benin. While LoCAL strengthens the institutional capacities of local authorities in climate planning and budgeting, as well as basic adaptation infrastructure (water supply, flood protection, hydro-agricultural developments) through performance-based financing, the PRCC CCLC works directly with vulnerable populations and their community organizations. To ensure coordination and avoid duplication, the FNEC, the focal point for both mechanisms, will establish a joint quarterly Steering Committee and a georeferenced database integrating all beneficiaries and sub-projects funded by LoCAL, the PRCC CCLC, and other climate sources. The FNEC will apply a rigorous verification protocol including: systematic verification of intervention history; consultation of municipal registers; automatic exclusion of beneficiaries who have received similar support in the previous 24 months; prioritization of groups and areas not yet covered; and access for LoCAL beneficiaries to the PRCC CCLC only for different and complementary interventions, after validation by the Steering Committee.

G –Lessons learned, knowledge management, and insights gained

If applicable, describe the learning and knowledge management component to capture and disseminate

lessons learned and how this contributes to building and institutionalizing local capabilities. Provide details on managing traditional and/or indigenous knowledge, where relevant.

Effective knowledge management and continuous learning are essential factors in ensuring the success and sustainability of local climate change adaptation initiatives. Component 3 of the project, “Sustaining project achievements and knowledge management,” was designed to systematically collect, synthesize, and disseminate lessons learned from various locally implemented adaptation initiatives (LLA) in a relevant, accessible, and sustainable manner. By adopting a community-based and participatory approach, this project aims to fill major gaps in knowledge and evidence, and to strengthen collective understanding of good practices for locally implemented, equitable, and effective initiatives. It also aims to support informed decision-making by local stakeholders and government institutions.

The communication strategy for local adaptation initiatives developed as part of this project will be based on this component 3 and will aim to promote the results obtained by capitalizing on them and disseminating them to all local communities in the five (05) beneficiary municipalities, as well as to managers and authorities responsible for local development. This communication strategy will be structured around the following activities:

- **Project launch workshop:** this aims to inform and discuss with all local stakeholders (farmers, livestock breeders, fishermen, professional agricultural organizations (PAOs), community leaders, local and decentralized authorities, etc.) about the opportunities offered by the project's interventions to create the conditions for successful implementation of local adaptation initiatives (LAIs) and to strengthen the resilience of the crop, livestock, and fisheries sectors to climate hazards.
- **Exchange visits and experience-sharing workshops (activity 3.2.2):** these are designed to enable project beneficiaries to share the experiences they have gained with each other during exchange visits with other local non-beneficiaries during experience-sharing workshops. These exchanges could spark interest among other stakeholders, particularly local communities and authorities and the private sector, in good agricultural, animal and fisheries practices, as well as in the value chain development models implemented by the project.
- **Training of farmers, livestock keepers, and fishers:** it aims to transmit knowledge on good agricultural, livestock, and fishing practices, as well as on the management of agricultural value chains, in order to generate their interest in these practices and then lead them to gradually adopt them as satisfactory results are achieved.
- **Workshops for the review and capitalization of project results:** these workshops will serve as a platform for presenting the project results and raising awareness among opinion leaders of the benefits and opportunities associated with local adaptation initiatives. Testimonies from beneficiaries will make it possible to concretely assess the socio-economic impacts of the project's interventions and achievements in the five (05) beneficiary municipalities. The participation of climate change management stakeholders, as well as staff from decentralized agricultural, livestock, and fisheries structures, will foster an in-depth understanding of the project results and contribute to the dissemination of the accumulated know-how to other localities.
- **Dissemination of project results:** through the media (local radio, social networks, print media, television, the FNEC website), as well as through institutions responsible for agriculture, livestock, and fisheries, universities, secondary schools and agricultural training institutions, agricultural extension centers, and NGOs operating in the agricultural sector, the project's achievements will reach a larger number of farmers, livestock keepers, fishers, communities, local authorities, and stakeholders involved in the management of the agricultural sectors in Benin.

H –Stakeholder consultation

Describe the consultative process, including the list of stakeholders consulted, undertaken during

project preparation, with particular reference to vulnerable groups, including gender considerations, in compliance with the Environmental and Social Policy and Gender Policy of the Adaptation Fund. Provide details on how the consultative process considered and addressed gender-based, economic and other inequalities and encouraged vulnerable and marginalized individuals to meaningfully participate in and lead adaptation decisions

The consultation process conducted in April 2025 as part of the preparation of the project concept note incorporated the principles of the Environmental and Social Policy and the Gender Policy of the Adaptation Fund (AF). This approach ensured the meaningful participation of vulnerable groups, with specific attention to gender dimensions. Indeed, the mission team was composed of four (04) members, including two (02) representatives of the Communauté de Communes des Lagunes Côtières (CCLC): one (01) representative of the Fonds National pour l'Environnement et le Climat (FNEC) and one (01) FNEC consultant. The team visited the five municipalities that make up the CCLC, as indicated in the table below. At each stage, the consultation was organized into three phases: (i) a meeting with local authorities, (ii) discussions with potential project beneficiaries, and (iii) a field visit. The stakeholder consultation mission involved the participation of 202 individuals, including 21.78% women and 5.94% persons with disabilities. The lists of participants are presented in Annex 3. The rate of women's participation varied across municipalities, ranging from 15.9% to 29.55%. Thus, to ensure inclusive understanding, the interview guides were conducted in French and in the local languages Fon and Mina. At the end of the discussions, the consultation team carried out field visits with particular attention to critical areas. Exchanges with stakeholders made it possible to collect key information on the climate challenges faced by the municipalities of the Communauté de Communes des Lagunes Côtières. Indeed, all municipalities reported exposure to various climate phenomena, such as floods, strong winds, irregular rainfall, and prolonged droughts. These events have caused crop destruction, losses of human life and livestock, damage to infrastructure, the disappearance of fish, plant, and animal species, as well as disruptions to the agricultural calendar. Women emphasized their increased exposure to climate risks. According to them, domestic work increases during droughts, such as water collection. In response to these challenges, communities identified priority needs, including the deployment of sustainable irrigation systems powered by solar energy, active ecosystem restoration (reforestation, lake dredging), strengthening local capacities through agroecology farmer field schools, and the establishment of inclusive early warning systems for vulnerable people.

Table 5 : Distribution of consulted stakeholders

N°	Dates	Municipalities visited	Total number	Men	Women	People with disabilities
1	22/04/2025	Ouidah	29	22	07	03
2	23/04/2025	Kpomassè	43	35	08	01
3	24/04/2025	Comè	44	37	07	03
4	25/04/2025	Grand-Popo	42	33	09	03
5	28/04/2025	Abomey-Calavi	44	31	13	02
Total			202	158	44	12

The following photos illustrate some key moments from the stakeholder consultations.

○ **Ouidah stage**



○ **Kpomassè stage**

○ **Comè stage**



- **Grand-Popo stage**



- **Abomey-Calavi stage**



I –Justification for funding

Provide justification for funding requested, focusing on the full cost of adaptation reasoning.

The requested funding is essential to ensure sustainable adaptation to climate impacts in the Communauté de Communes des Lagunes Côtières (CCLC) by strengthening the resilience of vulnerable communities and strategic sectors (subsistence agriculture, livestock, artisanal fishing). This request addresses the urgent need to respond to increasing climate challenges marked by intensified risks and significant losses. The funding will deploy a comprehensive adaptation strategy that reduces current vulnerabilities and reinforces the resilience of exposed populations, particularly women, youth, and marginalized producers, while creating sustainable development opportunities aligned with the objectives of the Adaptation Fund.

Complexity of climate risks and diversity of impacts: The CCLC faces interconnected risks (cyclical floods, coastal erosion, marine submersion, salinization, droughts, strong winds, heat waves) with serious consequences for communities and socio-economic sectors. This multiplicity requires an integrated, multisectoral approach, justifying significant investment for comprehensive coverage and targeted responses.

Increased vulnerability of populations and ecosystems: Climate change exacerbates the susceptibility of CCLC communities to extreme events, particularly rural and lagoon populations, local infrastructure, and fragile ecosystems (lagoons, mangroves, wetlands). The intensification of climate events increases vulnerability, necessitating investments to strengthen the capacity of vulnerable communities dependent on climate-sensitive natural resources to anticipate, respond to, and recover from shocks.

Socio-economic costs of climate damages: Extreme events have significant economic consequences in the CCLC. Recurrent floods cause loss of life, destruction of infrastructure (housing, fishing equipment, fields), and substantial losses in agriculture, livestock, and fisheries, disrupting essential services, increasing food insecurity, and compromising livelihoods. The funding aims to mitigate these losses by strengthening the adaptation capacity of communities, production systems, and ecosystems, acting proactively before these events escalate into crises.

Sustainable development opportunities: Adaptation investments generate positive effects, including

the diversification of resilient value chains, creation of alternative income-generating activities, restoration of lagoon and coastal ecosystems, and promotion of climate-resilient practices, producing lasting benefits for future generations.

The project aims to strengthen the climate resilience of vulnerable populations in the CCLC by supporting community-based adaptation initiatives integrated into plant, animal, and aquaculture value chains. Without Adaptation Fund financing, this objective would be hindered: the municipalities lack robust mechanisms to access funding for community adaptation initiatives, capacities to design and implement resilient practices, and effective inter-municipal coordination. The absence of an Adaptation Fund-aligned financing window within FNEC and sustainability mechanisms limits the dissemination and replication of effective practices, preventing communities from diversifying livelihoods, restoring ecosystems, and responding to climate risks.

Support from the Adaptation Fund is crucial to address these strategic gaps, protect vulnerable populations and their livelihoods, and strengthen inter-municipal resilience. Without this funding, municipalities will be unable to align with best practices in community-based climate risk management or ensure adequate protection. The Adaptation Fund serves as a key lever to transform vulnerability into resilience through concrete, coordinated, and sustainable actions, leveraging existing institutional structures (FNEC, municipal agricultural councils, community organizations) rather than creating new entities, thereby reducing implementation costs.

J – Sustainability

Describe how the sustainability of the project/programme outcomes has been taken into account when designing the project / programme. In particular, describe how the project/programme supports long-term development of local governance processes, and improves the capacity of local institutions (including through simpler access modalities), and how it can ensure that communities can effectively implement adaptation actions, facilitate and manage adaptation initiatives over the long term without being dependent on project-based donor funding.

The sustainability of the project's results was carefully integrated from the design phase through the active involvement of national and local stakeholders and the implementation of a participatory approach. Ministries, municipalities of the Communauté de Communes des Lagunes Côtières (CCLC), civil society, the private sector, and the beneficiaries themselves (notably women's and youth groups involved in plant, animal, and fisheries value chains) will be engaged at every stage of implementation, ensuring that actions undertaken address the real needs of communities and stakeholders. The participation of central and regional directorates, in collaboration with community organizations, NGOs, and private actors, guarantees local and inclusive management of initiatives.

The project will also focus on strengthening the capacities of end-users through training and awareness-raising activities to promote the dissemination and adoption of climate-smart adaptation practices within the municipalities, as well as the dissemination of resilient tools and technologies for producers and value chain actors. In this way, the sustainability of results will be ensured through the continued involvement of local actors, decentralized resource management, and capacity-building actions aimed at securing the long-term benefits of the project.

The project aims to strengthen the resilience of local communities to climate change by supporting community-based adaptation initiatives integrated into the value chains of plant, animal, and fisheries sectors. By the end of the project, several adaptation benefits are expected to emerge and be sustained over the long term, including:

- **Sustainable strengthening of technical and institutional capacities:** The developed training modules, mapping reports of resilient practices, and capacity-building activities carried out (Component 1) will continue to provide local actors (community groups, municipal agricultural advisory services, and sectoral institutions) with the necessary skills to design, implement, and

monitor adaptation initiatives. Beneficiary institutions, notably municipal agricultural councils and the Fonds National pour l'Environnement et le Climat (FNEC), will maintain their enhanced operational capacities, ensuring the continuity of climate-resilient practices.

- **Sustainable local financing mechanisms:** The FNEC-adapted financing window (Component 2) and the sustainable financing mobilization mechanism (Activity 3.1.1) will facilitate ongoing access to resources for community initiatives, even beyond the project's duration. Funded initiatives will be maintained and potentially replicated thanks to the involvement of trained local actors.
- **Local ownership and inclusive access to adaptation practices:** Through community support, inclusive knowledge dissemination formats (toolkits, exchange visits, workshops, and the FNEC digital platform), and the involvement of vulnerable groups (women, youth, marginalized producers), communities will develop lasting skills to adopt and promote resilient practices. Repeated trainings and simulations will cultivate appropriate local adaptation reflexes.
- **Knowledge and Learning Management (KLM):** A structured KLM mechanism will be established through Activities 3.2.1, 3.2.2, and 3.2.3 to capitalize on best practices, ensure continuous training, and improve local and national adaptation policies.

Beyond the project's lasting benefits, the sustainability of its interventions will be ensured through public-private partnerships (Activity 3.1.2) and the implementation of innovative mechanisms for mobilizing sustainable financing. This will guarantee stable resources for the maintenance and continuity of initiatives. The sustainability of these actions also depends on a strengthened regulatory and institutional framework, with the integration of project achievements into municipal and inter-municipal development plans. Finally, social anchoring is promoted through the active participation of vulnerable groups, the co-creation of adaptation initiatives, and the use of community intermediaries to disseminate and encourage the adoption of practices. This ensures the long-term sustainability of interventions.

K –Risks related to environmental and social impacts

Provide an overview of the environmental and social impacts and risks identified as being relevant to the project / programme.

Based on available information and expert judgment, the preliminary identification of project risks for each relevant outcome, with regard to the fifteen Environmental and Social (E&S) principles of the Adaptation Fund (AF), conducted during consultations with the relevant national and local stakeholders, led to the classification of the project as Category B, with the probability of risks considered moderate. The potential impact of these risks is limited, localized, and manageable. However, a thorough assessment, in accordance with E&S standards, will be conducted with local beneficiaries, including competent technical staff, during the development of the full proposal, in line with the Adaptation Fund's E&S Policy.

Table 6 : Identified Environmental and Social Impacts and Risks

Checklist of environmental and social principles	No further assessment required for compliance	Potential impacts and risks – further assessment and management required for compliance
<i>Principle 1: Compliance with the Law</i>		<p>Risk: Low Potential impact: Low The project will be implemented in full compliance with all relevant national and international legislation, including environmental framework law, climate change law, and climate services regulations. However, potential risks of non-compliance may arise during implementation and will require continuous clarification. Mitigation Plan: A comprehensive environmental and social assessment will be carried out at the full proposal stage to ensure compliance with the Adaptation Fund's 15 ESP principles and national standards. Further assessment required to ensure continued compliance.</p>
<i>Principle 2: Access and Equity</i>	X	<p>Justification: Although the design of the LLA project promotes inclusive access, structural barriers such as gender, location and socio-economic status could lead to inequities in the sharing of benefits. The outreach, targeting and small grant selection processes under Component 2 will specifically screen for equitable access through criteria and procedures. Mitigation Plan: The IE and the PMU will ensure that the project provides fair and equitable access to benefits for all community members and is implemented in a way that does not impede any group's access to essential services and rights. No further assessment required.</p>
<i>Principle 3: Marginalized and Vulnerable Groups</i>		<p>Risk: Low Potential impact: Low While the LLA project prioritizes marginalized and vulnerable groups, the risk of unintentional exclusion persists due to social norms or power imbalances. Mitigation Plan: The stakeholder engagement and participatory planning will clearly define the community engagement and deployment processes, as well as the screening and mitigation measures. Further assessment required.</p>
<i>Principle 4: Human Rights</i>		<p>Risk: Low Potential impact: Low No activities are planned that would violate international human rights norms. All community engagement, grant awards and deployment activities will respect civil, political, economic, social and cultural rights. Mitigation Plan: IE will ensure that human rights issues are included in consultations with stakeholders during the Environmental and Social Impact Assessment (ESIA) study, which will provide an overview of relevant issues and monitor implementation. Further assessment required.</p>
<i>Principle 5: Gender Equality and Women's Empowerment</i>		<p>Risk: Medium Potential impact: Medium There is a moderate risk that entrenched social norms may prevent women from participating equally in, or benefiting from, LLA's project activities. Mitigation Plan: Gender is mainstreamed throughout all project components. An initial gender analysis has been carried out, and a more detailed analysis will be completed at the stage of developing the full proposal through the Gender Assessment and Gender Action Plan. Further assessment required.</p>
<i>Principle 6: Core Labor Rights</i>		<p>Risk: Low Potential impact: Low Although the project is committed to respecting both ILO core labor standards and national labor law, some of its activities may not meet these standards due to a lack of knowledge regarding labor rights. Mitigation Plan: The project will adhere to core labor rights and incorporate ILO standards into its design and implementation. It will also raise awareness of how these standards can be applied. Further assessment required.</p>
<i>Principle 7: Indigenous Peoples</i>		<p>Risk: Low Potential impact: Low No indigenous peoples have been identified in the project area at this stage. However, there is a risk that project activities may fail to adequately consult with or benefit indigenous peoples in areas where they are present. Mitigation Plan: During project implementation, a detailed analysis will be carried out to confirm or rule out the presence of minorities or marginalized ethnic groups in the area. Appropriate measures will then be taken in line with the United Nations Declaration on the Rights of Indigenous Peoples (UNDRIP). Further assessment required.</p>
<i>Principle 8: Involuntary Resettlement</i>	X	<p>Justification: The project will not finance infrastructure or other interventions that require displacement or resettlement. All sites proposed for agricultural, animal, and fishing activities will undergo an Environmental and Social Impact Assessment (ESIA) to ensure this condition is upheld. No further assessment required.</p>
<i>Principle 9: Protection of Natural Habitats</i>		<p>Risk: Low Potential impact: Low here is a slight risk that the deployment of adaptation technologies may affect sensitive habitats unintentionally (e.g. through small-scale agro-processing or irrigation). Mitigation Plan: Project activities will be screened for such impacts under the Environmental and Social Impact Assessment (ESIA) process, and mitigation measures will be developed where relevant. Further assessment required.</p>
<i>Principle 10: Conservation of Biological Diversity</i>		<p>Risk: Low Potential impact: Low Although the LLA project promotes ecosystem-compatible solutions, risks may arise if activities such as reforestation unintentionally introduce invasive species or disrupt local biodiversity. Mitigation Plan: The ESIA will include guidance and safeguards to prevent such risks, and these will be supported through awareness activities. Further assessment required.</p>
<i>Principle 11: Climate Change</i>	X	<p>Justification: All interventions are adaptation-oriented and will not result in significant emissions. However, to avoid maladaptation, specific screening tools will be included in the feasibility studies and project design to evaluate the alignment of each activity with long-term resilience goals. No further assessment required.</p>
<i>Principle 12: Pollution Prevention and Resource Efficiency</i>		<p>Risk: Low Potential impact: Low Although most supported technologies will be environmentally friendly, some adaptation options may pose a risk to resource efficiency, for example, through waste from product packaging or excessive water use. Mitigation Plan: Activities will be screened, and mitigation plans will be developed in accordance with the ESIA guidelines. Further assessment required.</p>
<i>Principle 13: Public Health</i>	X	<p>Justification: The project is not expected to have a negative impact on public health. In fact, many of the implemented solutions could enhance climate resilience and improve public health outcomes. No further assessment required.</p>
<i>Principle 14: Physical and Cultural Heritage</i>	X	<p>Justification: It is not expected that any of the activities will affect cultural or physical heritage sites. However, precautionary measures and screening will be carried out during the project's implementation. No further assessment required.</p>
<i>Principle 15: Lands and Soil Conservation</i>	X	<p>Justification: The project promotes adaptation options designed to enhance land productivity and reduce degradation. Screening for soil-related impacts will be incorporated into the Environmental and Social Impact Assessment (ESIA) to ensure these benefits are maintained. No further assessment required.</p>

PART III: IMPLEMENTATION ARRANGEMENTS

A – Alignment with the Adaptation Fund Results Framework

Demonstrate how the project/programme aligns with the Results Framework of the Adaptation Fund.

Table 7: Alignment with the Adaptation Fund Results Framework

Project Objective(s)	Project Objective Indicator(s)	Fund Outcome	Fund Outcome Indicator	Grant Amount (USD)
Strengthening the technical and institutional capacities of stakeholders to improve the resilience of local community livelihoods to the impacts of climate change	% of vulnerable communities in the covered municipalities that benefited from the adaptation options offered by the project	Outcome 6: Diversified and strengthened livelihoods and sources of income for vulnerable people in targeted areas	6.1: People adopting improved and/or new climate-resilient livelihood practices	3.618.000
Establish a local financing mechanism to support the development of community-based initiatives for adapting to ecosystem restoration and value chains in the plant, animal, and aquaculture sectors.	<ul style="list-style-type: none"> - Number of producers benefiting from the project whose income increased - Food availability rate of products from the three targeted sectors 		6.2: Households with increased income, or avoided decrease in income	
Developing tools for knowledge capitalization and management.	<ul style="list-style-type: none"> - Total area (ha) of ecosystems restored or conserved through the project - Number of ecosystem services improved 		5: Ecosystems and natural resources brought under protection, restoration, or improved management in response to climate variability and change	
Project Outcome(s)	Project Outcome Indicator(s)	Fund Output	Fund Output Indicator	Grant Amount (USD)
Outcome 1.1 : The technical and organizational capacities of actors in the plant, animal and fisheries sectors are sustainably strengthened, enabling them to design and implement resilient climate adaptation initiatives.	Number of actors in the plant, animal and fisheries sectors benefiting from climate-resilient adaptation initiatives	Output 6.1: Targeted individual and community livelihood strategies strengthened in relation to climate change impacts, including variability	6.1.1: People receiving targeted support for new and/or improved livelihoods to manage climate risk	308.000
Outcome 1.2 : Local and sectoral institutions have increased capacities to integrate climate adaptation into the planning, regulation and support for the development of agricultural, livestock and fisheries value chains, thereby ensuring sustainable and inclusive governance of climate change resilience	<ul style="list-style-type: none"> - Number of local and sectoral institutions benefiting from capacity building - Number of managers from local and sectoral institutions trained in integrating climate adaptation into the planning, regulation, and support for the development of agricultural, livestock, and fisheries value chains 	Output 2.1: Strengthened capacity of institutions to understand and better address climate risks	2.1.1: Institutions supported to strengthen capacity to understand and address climate risks and resilience	100.000
Outcome 2.1 : The FNEC financing window is operational and allows vulnerable actors in the agricultural, livestock and fisheries sectors of the CCLC to access funding for climate adaptation initiatives	Total amount of funding granted to vulnerable actors via the FNEC window for local level climate adaptation initiatives (LLA)	Output 2.2: Increased readiness and capacity of national and sub-national entities to directly access and programme adaptation finance	2.2.1: Local organizations receiving funding or other direct support under the locally led adaptation modality	40.000
Outcome 2.2 : The resilience of the livelihoods of vulnerable actors in the plant, animal and fisheries sectors is strengthened through the implementation of adaptation initiatives funded by the LLA project of the Adaptation Fund	<ul style="list-style-type: none"> - Rate of income improvement among beneficiaries of funded adaptation initiatives - Rate of food security improvement among beneficiaries of funded adaptation initiatives 	Output 6.1: Targeted individual and community livelihood strategies strengthened in relation to climate change impacts, including variability	6.1.1: People receiving targeted support for new and/or improved livelihoods to manage climate risk	3.030.000
Outcome 3.1 : A sustainability strategy is being developed and implemented, ensuring continuity, local ownership, and the integration of the project's achievements into sustainable development and climate change adaptation policies, mechanisms, and practices.	Number of formalized documents or mechanisms	Output 3.1: Targeted population groups participating in adaptation and risk reduction awareness activities Output 3.3: Increased ownership of adaptation and climate risk reduction processes	3.1.1: People participating in activities to improve awareness of climate risks and how to address them 3.3.1: Number of local institutions and/or communities responsible for decision-making over how adaptation solutions are defined, prioritized, designed, and/or implemented	140.000
Outcome 3.2 : Knowledge management is strengthened, and lessons learned and best adaptation practices are documented, capitalized, and disseminated inclusively to promote learning, replication, and scaling up of climate change adaptation actions.	Number of activities to disseminate good practices and lessons learned carried out	Output 8.1: Innovations identified and piloted that collectively enhance local innovation capacity and contribute to the development of local, national and regional adaptation innovation ecosystems Output 8.2: Innovations identified and piloted which build the adaptation innovation evidence-base and institutional capacity	8.1.1: Innovations identified that demonstrate local innovation participation and/or local innovation benefit 8.2.1: Innovation-focused knowledge products disseminated and/or learning events facilitated that support and enable innovation capacity at a local, national, and/or regional level	

A. Record of endorsement on behalf of the government²

Provide the name and position of the government official and indicate date of endorsement. If this is a regional project/programme, list the endorsing officials all the participating countries. The endorsement letter(s) should be attached as an annex to the project/programme proposal. Please attach the endorsement letter(s) with this template; add as many participating governments if a regional project/programme:

<i>(Enter Name, Position, Ministry)</i>	Date: <i>(Month, day, year)</i>
Please, see Appendix 1: Letter of endorsement from the AND	

Appendix 1: Letter of endorsement from the AND



MINISTÈRE DU CADRE DE VIE
ET DES TRANSPORTS
EN CHARGE DU DÉVELOPPEMENT DURABLE
RÉPUBLIQUE DU BÉNIN

01 BP 3502 - 01 BP3621 Cotonou
+ 229 21 31 29 12/ 21 31 47 12
mvt.info@gouv.bj
www.cadredevie.gouv.bj



ADAPTATION FUND

Direction Générale de l'Environnement et du Climat

Cotonou, le **04 JAN 2026**

N° 0006/DGEC/MCVT/PF-CC/SD

Letter of Endorsement by Benin Government

To: The Adaptation Fund Board c/o
Adaptation Fund Board Secretariat
Email: Secretariat@Adaptation-Fund.org
Fax: 202 522 3240/5

Subject: Endorsement of Locally Led Adaptation to strengthen the climate resilience of vulnerable communities in Benin's Coastal Lagoons Inter-Municipal Community.

In my capacity as designated authority for the Adaptation Fund in Benin, I confirm that the above national project concept note is in accordance with the government's national priorities in implementing adaptation activities to reduce adverse impacts of, and risks, posed by climate change in the regions.

Accordingly, I am pleased to endorse the above project concept note with support from the Adaptation Fund. If approved, the project will be implemented by National Fund for Environment and climate and executed by national executing entity.

Sincerely,

M. Ibila DJIBRIL,

Director General for Environment and Climate,
Designated Authority for the Adaptation Fund.

Appendix 2: List of participants in stakeholder consultations

Appendix 2.1: List of participants in the consultation with potential beneficiaries in Ouidah

Four tables showing participant lists for Ouidah consultations. Each table includes columns for Name, Address, Gender, Age, and Signature.

Appendix 2.2: List of participants in the consultation with potential beneficiaries in Kpomassè

Four tables showing participant lists for Kpomassè consultations. Each table includes columns for Name, Address, Gender, Age, and Signature.

Appendix 2.3: List of participants in the consultation with potential beneficiaries in Comè

Four tables showing participant lists for Comè consultations. Each table includes columns for Name, Address, Gender, Age, and Signature.

Appendix 2.4: List of participants in the consultation with potential beneficiaries in Grand-Popo

Four tables showing participant lists for Grand-Popo consultations. Each table includes columns for Name, Address, Gender, Age, and Signature.

Appendix 2.5: List of participants in the consultation with potential beneficiaries in Abomey-Calavi

Four tables showing participant lists for Abomey-Calavi consultations. Each table includes columns for Name, Address, Gender, Age, and Signature.

Appendix 3: Eligibility menu for adaptation subprojects and exclusion list**Appendix 3.1: Eligibility menu for adaptation subprojects**

N°	Action	Practical example
1	Adapted agriculture, fish farming and soil protection	Integrated management of agricultural and fishery resources. Permaculture applied in home or market gardens with small-scale manual mechanisation. Use organic fertilisers and other organic materials to manage soil fertility. Conduct trials of conservation agriculture, anti-erosion practices and cover crop use on small plots.
2	Development and promotion of micro-irrigation through solar-powered pumping equipment	Installation of small-scale gravity irrigation systems for small farms, including drip irrigation and shallow wells. Creation of small irrigated gardens on the outskirts.
3	Agricultural, market gardening, and fish farming practices adapted to the climate	Development of the value chain for improved seeds (cereals and market garden produce) and high-quality fry, Trials of crop rotation, crop combinations to combat pests and invasive species, intercropping for better yields, integrated farming (crops-livestock-forestry) on small plots/communal plots, Development of the processing chain for cereals and market garden produce, Development of the marketing chain for cereals and market garden products, Promotion of innovative and intelligent preventive methods to combat pest infestation, Acquisition, installation, and management of low-carbon post-harvest management equipment
4	Sustainable management of natural forests and improvement of reforestation efforts	Streamline the exploitation of non-timber forest resources and promote the sustainable development of non-timber forest product (NTFP) value chains. Promote alternative income-generating activities to diversify livelihoods and reduce pressure on forest ecosystems. Promote public and community plantations. Secure the boundaries of public/community forest areas. Make forest management committees operational in order to rationalize the use of resources. Restore 50 ha of mangrove forest per year in the CCLC area.
5	Dissemination of improved practices for degraded land management	Restoration of degraded areas to create pastures that also provide ecosystem services such as water retention, soil erosion reduction, and flood protection. Restoration of gallery forests and degraded land through tree planting. Extension of sustainable land management technologies.
6	Implementation of appropriate agroforestry and marine practices	Planting fruit trees in accordance with best practices for the conservation of local biodiversity and compliance with national legislation. Raising awareness for the protection of migratory birds in the Mono Biosphere Reserve and other CCLC protected areas. Bio-monitoring: Monitoring the ecological values of the reserve (sea turtles, mangroves, birds, manatees, primates, cetaceans, fish, etc.). Raising awareness among public and private stakeholders for the conservation of marine and coastal species (sea turtles, monkeys, crocodiles, African manatees).
7	Measures to prevent and combat forest fires	Installation of firebreaks - in accordance with best practices for preserving local biodiversity and complying with national legislation - and their maintenance using small farm animals (usually goats)
8	Development of resilient community water points (Development of Runoff Water Collection Basins (BCER))	Development of community water points for watering animals (non-human use) < 20 linear meters or less than 100 m2
9	Maintenance of low-lying areas, water points, and irrigated areas	Reforestation of riverbanks and shallow areas to provide shade and reduce wind-related water loss.
10	Rehabilitation of water management infrastructure for the benefit of organizations producing cereals (sorghum, fonio, millet, and soybeans) and market	Acquisition and installation of prefabricated water tanks without additional footprint on a small scale and at the village level

Annex 5 to OPG Amended in October 2017

N°	Action	Practical example
	garden and fish farming products	
11	Active land management to optimize water intake	Acquisition and installation of modern prefabricated water storage infrastructure, without any activity in protected areas or areas of high ecological or archaeological value, and without waste or wastewater issues. These interventions consist of capturing rainwater in fields by modifying land use, following contour lines. Construction of longitudinal trenches to promote water infiltration on sloping land. Use of stone barriers. Construction of terraces.
12	Promoting efficient wood energy use and access to alternative energy sources as part of or in support of adaptation actions and/or objectives (co-benefits for mitigation)	Promote access to electricity in these regions, promote access to improved stoves, cooking and processing equipment (e.g., solar), promote access to butane gas, densify agricultural residues and waste into briquettes using small manual machines, compost in windrows.
13	Promote and develop renewable energy within the framework of or in support of adaptation actions and/or objectives (associated mitigation benefits)	Solar energy capture zone. All interventions must focus on small-scale infrastructure and/or rural energy in an already urbanized area with no additional footprint, such as small- and very small-scale renewable energy, modernization of renewable energy systems, energy efficiency, and energy conservation.
14	Protection of the living environment and sustainable management of the environment	Establishment of nurseries for local native plant species (including mangroves in mangrove forests) One nursery per district established At least 10,000 seedlings produced annually Activity reports and minutes of acceptance of work for the establishment of plant nurseries
15	Implementation of investments in coastal and riparian zone protection	Protection of coastal and riparian ecosystems (community-level management measures and training, reforestation based on best practices; no negative impacts on habitat, cleaning of coastal lakes and lagoons). Ecosystem-based adaptation measures, in which river basins, aquifers, floodplains, and their vegetation are managed to ensure water storage and flood control.

Appendix 3.2: Exclusion list

Sector	Activity category	Description
Agriculture	Adapted agriculture and fish farming and soil protection	<ul style="list-style-type: none"> · (Land clearing, pesticide use, aerial spraying, ground application) > 10 ha "· Introduction of pesticides not approved by the government; - use of pesticides classified by the World Health Organization as hazard categories Ia (extremely hazardous) and Ib (very hazardous) or category II (moderately hazardous)"
	Development and promotion of micro-irrigation using solar-powered pumping equipment	<ul style="list-style-type: none"> · Irrigation project >100,000 m² · Construction of wells: > 30 cm in diameter and 1 km in length · Groundwater pumping: >500 m³/day
Climate-adapted forestry	Climate-adapted agricultural, market gardening, and fish farming practices	<ul style="list-style-type: none"> · Poultry, sheep, goat, cattle, and pig farming · Forestry: reforestation and/or silvicultural operations > 100 ha; · Classification of protected areas or zoological gardens, creation of parks, harvesting of wood materials, including roads, tracks, and camps · Introduction of invasive or non-government-approved crops · Pest and invasive species control: use of pesticides >10 ha; - use of pesticides classified by the World Health Organization in hazard categories Ia (extremely hazardous) and Ib (very hazardous); or in category II (moderately hazardous).
	Sustainable management of natural forests and improved reforestation efforts	<ul style="list-style-type: none"> · Reforestation and/or silvicultural treatments >100 ha; · Classification of protected areas or zoological gardens, creation of parks, harvesting of wood materials, including roads, tracks, and camps

Annex 5 to OPG Amended in October 2017

Sector	Activity category	Description
		<ul style="list-style-type: none"> Any activity resulting in involuntary resettlement or land acquisition (including non-physical displacement and involuntary restrictions on economic activities and land use)
		Reforestation with invasive species, including GMOs
		Activities likely to result in unsustainable exploitation of native tree species
		Clearing of vegetation for conversion to agricultural land
Agroforestry	Dissemination of improved practices for managing degraded land	Forestry: reforestation and/or silvicultural treatments >100 ha; Classification of protected areas or zoological gardens, creation of parks, harvesting of wood materials, including roads, tracks, and camps
	Implementation of adapted agroforestry practices	Forestry: reforestation and/or silvicultural treatments >100 ha Classification of protected areas or zoological gardens, creation of parks, harvesting of wood materials, including roads, tracks, and camps
	Management and adaptation of grazing areas based on ecosystem conservation	Any activity that will lead to an increase in the use of agrochemicals.
	Measures to prevent and combat forest fires	Forestry: reforestation and/or silvicultural treatments >100 ha; Classification of protected areas or zoological gardens, creation of parks, harvesting of wood materials, including roads, tracks, and camps <100 ha
Water	Development of resilient community water points	Dredging, excavation, backfilling, or filling (> 20 linear meters or more than 100 m ²)
	Maintenance of lowlands and water points	Development of delta or lagoon areas
	Modifications to homes to optimize water consumption	Activities involving water extraction, such as well drilling and the development of water points for human use Deep drilling for water supply with a flow rate of 500 m ³ /day
	Active land management to optimize water intake	<ul style="list-style-type: none"> Dredging, excavation, backfilling, or filling (> 20 linear meters or more than 100 m²) Activities involving well drilling Construction of reservoirs and catchment basins with additional footprint
Energy	Promotion of efficient wood energy use and access to alternative energies as part of or in support of adaptation interventions and/or objectives (related mitigation benefits)	Industrial facility for energy or steam production
		Rehabilitation or construction of dams
		Water management Community basins for irrigation/livestock >20 m ³ in volume
		Water management Water reservoirs for irrigation/livestock with a volume >20 m ³
Infrastructure	Construction of resilient public facilities and infrastructure	Construction of walled or covered structures
		Construction of infrastructure with a new or additional footprint
Coastal and river protection	Implementation of investments in coastal and riparian zone protection	Construction of coastal protection structures (groins, breakwaters, etc.)
		Any activity that promotes soil degradation and erosion, or ecosystem disruption
Other	Loans to members of the administration and representatives of the municipality	
	Loans to private companies or associations	
	Financing of commercial and/or private activities	
	Municipal salaries and operating costs (offices, transportation, office equipment, and works)	
	Religious activities	
	Guarantees	
	Any activity likely to result in the involuntary displacement of people.	
	Any other activity that, when implemented, would pose medium or high environmental or social risks, according to the risk analysis in the GCF action plan.	
All drainage works		