



INDONESIAN  
GREENBELT  
INITIATIVE



# INCEPTION *Report*

Sustainable Landscape Governance:  
Towards Climate Resilience of Communities in  
the Tempe Lake Ecosystem

2026

## Country

Indonesia

## Implementing Entity

Kemiraan (Partnership for  
Governance Reform)

## Executing Entity

- Tim Layanan Kehutanan Masyarakat (*Lead*)
- Yayasan AKU Rimba Indonesia
- Yayasan Romang Celebes Indonesia
- Balla Konservasi Wallacea
- Indonesian Greenbelt Initiative
- Medialingkungan

## Grant Amount

USD 993,081

## Table of Contents

<b>1. INTRODUCTION.....</b>	<b>3</b>
1.1. Background.....	3
1.2. Project Summary Table .....	3
1.3. Project Component, Outcomes and Outputs .....	4
1.4. Project Area.....	5
<b>2. INCEPTION PHASE.....</b>	<b>7</b>
2.1. Inception Phase.....	7
2.2. Methodology and Approaches.....	8
<b>3. SOCIALIZATION IN VILLAGE LEVEL.....</b>	<b>9</b>
<b>4. INCEPTION WORKSHOP RESULTS .....</b>	<b>10</b>
4.1. Agenda and Summary.....	10
4.2. Participant’s inputs, feedback and project response .....	15
4.3. Outcome of Project Launching .....	16
<b>5. COMMUNITY WORKSHOP RESULT.....</b>	<b>16</b>
<b>6. CHANGES IN THE PROJECT DOCUMENT SINCE AF APPROVAL .....</b>	<b>19</b>
<b>7. CONCLUDING REMARKS.....</b>	<b>19</b>
<b>ANNEXES.....</b>	<b>20</b>
Annex 1. Participants of Socialization in Village Level.....	20
Annex 2. Participants of Project Launching.....	25
Annex 3. Participants of FPIC .....	29
Annex 4. Minutes of Agreement.....	36

## 1. INTRODUCTION

### 1.1. Background

The impacts of climate change on the Tempe Lake ecosystem have become more apparent through various climate-related phenomena, particularly changes in temperature patterns, prolonged droughts, and high rainfall occurring within short periods of time. These conditions have disrupted the livelihoods of farmers and fishers, while also increasing the rate of erosion in upstream areas. In addition to climate factors, non-climate factors also significantly contribute to disaster occurring within the Tempe Lake ecosystem.

Through this project, the main objective is to promote sustainable landscape governance that strengthens the climate resilience of communities in the Tempe Lake ecosystem. The project focuses on upstream areas, including forests and land areas, as well as communities around the lake that are directly affected by upstream activities.

The Project “**Sustainable Landscape Governance: Towards Climate Resilience of Communities in the Tempe Lake Ecosystem**” in South Sulawesi Province, Indonesia, is being implemented by KEMITRAAN (The Partnership for Governance Reform) as the National Implementing Entity (NIE), with Tim Layanan Kehutanan Masyarakat (TLKM) – Leading Consortium, Yayasan Romang Celebes Indonesia, Yayasan AKU Rimba Indonesia, Indonesian Greenbelt Initiative, Yayasan Balla Konservasi Wallacea, and Media Lingkungan as the Executing Entities (EE). The project will be implemented over 24 months with a total budget of USD 993,081.

### 1.2. Project Summary Table

*Table 1. Project Summary*

Project Name	Sustainable landscape governance; towards climate resilience of community in the Tempe Lake Ecosystem
Category	Small Size Project
Country	Indonesia
Thematic Focal Area	Rural Development
Implementing Entity	Kemitraan (The Partnership for Governance Reform)
Executing Entity	Tim Layanan Kehutanan Masyarakat (TLKM) Yayasan Romang Celebes Indonesia Yayasan AKU Rimba Indonesia Indonesia Greenbelt Initiative Yayasan Balla Konservasi Wallacea Media Lingkungan
Approval Date	10/10/2025
Expected Completion Date	06/22/2028

Duration	2 Years
Grant Amount	USD 993,081
Objective	Promote sustainable landscape governance that increases climate resilience of the community in the Tempe Lake ecosystem
Component	<p><b>Component 1:</b> Improving forest and other land use management in the upstream area of the Tempe Lake ecosystem to strengthen soil and water conservation.</p> <p><b>Component 2:</b> Promoting alternative fishery livelihood(s) to improve community climate resilience in water of the Tempe Lake ecosystem</p> <p><b>Component 3:</b> Strengthening community-based climate change adaptation actions.</p>

### 1.3. Project Component, Outcomes and Outputs

The ultimate objective of this project is to **promote sustainable landscape governance that increases climate resilience of the community in the Tempe Lake ecosystem**. The components and the expected outcomes of the project are organized according to the project framework, which explained below:

Table 2. Project Components, Outcomes, Outputs

Components	Outcomes	Outputs
<b>Component 1:</b> Improving forest and other land use management in the upstream area of the Tempe Lake ecosystem to strengthen soil and water conservation.	<b>Outcome 1.1.:</b> Improved social forestry management that increases livelihood sustainability	1.1.1. Forest farmers apply improve cultivation pattern in the targeted social forestry areas 1.1.2. Well-functioning social forestry business groups
	<b>Outcome 1.2.:</b> Improved community-based land use management in social forestry areas that increases ecosystem resilience	1.2.1. Participatory village land use plan applied to increase climate resilience 1.2.2. Ecological-based erosion prevention measures at the riverbanks 1.2.3. Sustainable local land use practices applied to recover critical lands
<b>Component 2:</b> Promoting alternative fishery livelihood(s) to improve community climate	<b>Outcome 2.1.:</b> Established alternative fishery livelihood for community in the water areas of Tempe Lake ecosystem	2.1.1. Fisherman groups including women and vulnerable people have advanced knowledge in

Components	Outcomes	Outputs
resilience in water of the Tempe Lake ecosystem		sustainable fish cultivation 2.1.2. Well-functioning small-scale fishery business groups established
<b>Component 3:</b> Strengthening community-based climate change adaptation actions.	<b>Outcome 3.1.:</b> Institutionalized climate change adaptation practices in the management of Tempe Lake ecosystem	3.1.1. Working group for Tempe Lake management with climate change adaptation action plan 3.1.2. Participatory planning process to integrate climate change adaptation practices in the Tempe Lake ecosystem management policies 3.1.3. Targeted villages are proposed to be registered for National Climate Village Program (ProKlim)
	<b>Outcome 3.2.:</b> Community champions on climate change adaptation practices emerged in the targeted villages, particularly women and youths	3.2.1. Knowledge and learning dissemination platform established 3.2.2. Engaged local youth in the campaigning climate change issues

The project will be implemented in the South Sulawesi Province, particularly in Wajo District and Soppeng District. The project targets 1,350 direct beneficiaries, of whom 30% are women, and 11,067 indirect beneficiaries, including 5,618 women. The project will strengthen the resilience of social forestry areas with planting and conservation activities covering 2,567 hectares, as well as riverbank restoration along 1 km.

#### 1.4. Project Area

This project is located in South Sulawesi Province, particularly in Wajo District and Soppeng District, covering a total of 6 intervention villages.

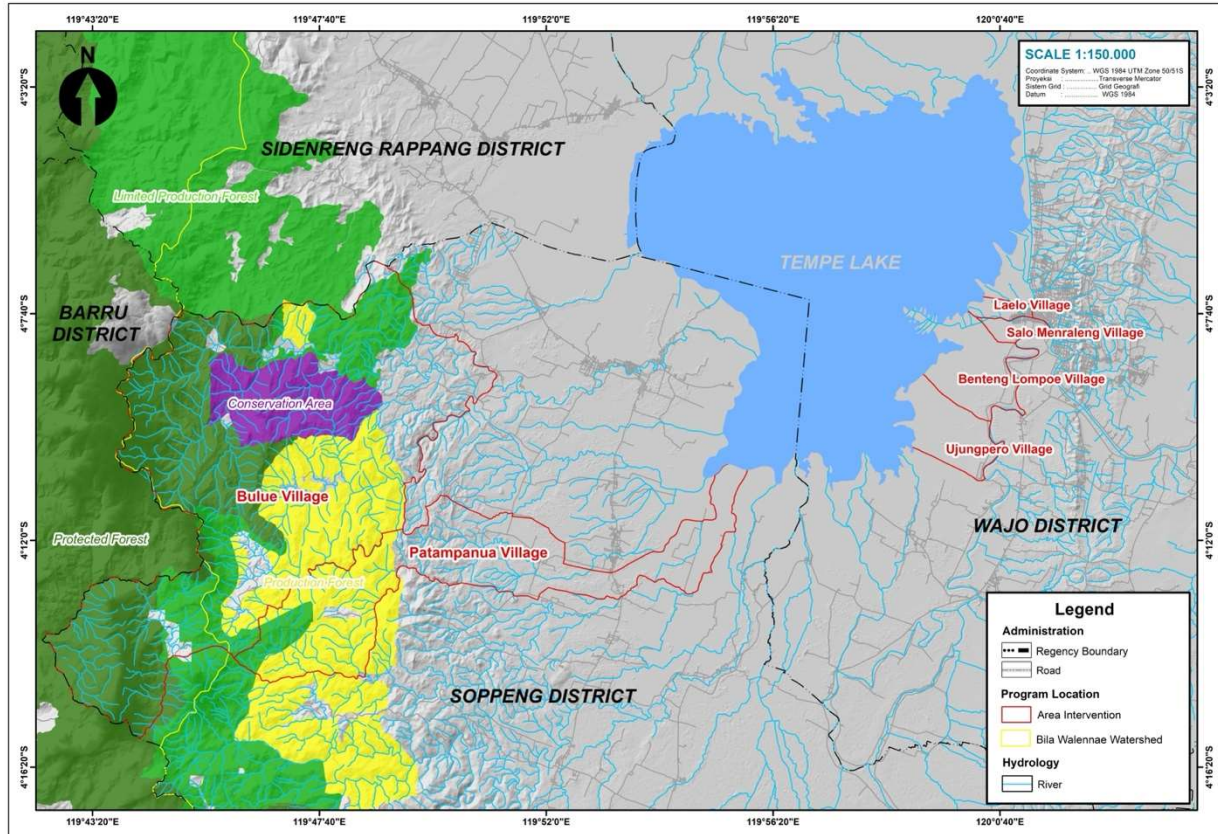


Figure 1. Project Area

Table 3. List of Villages/Kelurahan

District	Villages/Kelurahan	Ecosystem Intervention Areas
Soppeng	Patampanua	Forest
	Bulue	Forest
Wajo	Ujung Pero	Lake/Water
	Salomenraleng	Lake/Water
	Benteng Lompoe	Lake/Water
	Laelo	Lake/Water

## 2. INCEPTION PHASE

### 2.1. Inception Phase

In general, the main objective of the inception workshop was to officially launch the project “Sustainable Landscape Governance: Towards Climate Resilience of Communities in the Tempe Lake Ecosystem,” particularly to strengthen climate adaptation actions within the Tempe Lake ecosystem. Specifically, the inception workshop aimed to introduce the project and to obtain inputs and recommendations regarding the planning and implementation of the proposed project activities.

The inception phase is scheduled to take place from March to May 2026. Several key activities are being undertaken during this phase, including:



Figure 2. Inception Phase

- **Communication and Coordination:** Establishing communication and coordination with the Central Government (Ministry of Environment), the Provincial Government of South Sulawesi, the Governments of Wajo District and Soppeng District, village governments, and beneficiaries. The purpose of this agenda is to build initial communication regarding the adaptation project, particularly in the Tempe Lake ecosystem, and to explain the project planning process.
- **Socialization in Village Level:** Conducting socialization activities at the village level to introduce and explain the planned project activities so that communities can understand the project in detail.
- **Inception Workshop:** Conducting workshop that officially launch the project and also discussing inputs and recommendations from all relevant stakeholders involved in the project.

- **Community Workshop:** This inception phase is conducted using the Free, Prior, and Informed Consent (FPIC) approach as part of a participatory decision-making process. The process focuses on identifying and determining activities to be implemented while also obtaining input and recommendations from the community.

## 2.2. Methodology and Approaches

In the implementation of the inception activities, one of the main approaches used was a community-based approach. This approach was carried out using the Free, Prior, and Informed Consent (FPIC) methodology. The purpose of this method is to ensure that local communities become the main subjects in the decision-making process, rather than merely objects of consultation. In addition, this approach was chosen because the communities themselves will be the primary beneficiaries of the project.

Participatory and collaborative approaches were also applied in the implementation of the project, particularly in coordination with government institutions. This approach positions the government as a strategic partner in the project planning process, rather than only as a party providing administrative approval. Government stakeholders were involved from the early stages to build a sense of ownership toward the project. This approach was implemented through communication, coordination, and consultation meetings with various stakeholders who have authority and direct relevance to the project implementation. The objective of these approaches and methodologies is to ensure the alignment of the project with the Regional Medium-Term Development Plan (RPJMD) of South Sulawesi Province, the Regional Government Work Plan (RKPD), and other regional development priorities.

In an effort to gather inputs and recommendations from all stakeholders, including communities, the provincial government, district governments, and village governments, a communication forum was conducted in the form of a workshop. This activity aimed to align community needs with government priorities in strengthening climate adaptation efforts in South Sulawesi Province.

### 3. SOCIALIZATION IN VILLAGE LEVEL

The project socialization at the village level was conducted from 21–24 April 2026 in each intervention village. A total of 221 participants attended the activities, consisting of 143 men and 78 women. The participants included representatives from fisher groups, social forestry groups, women's groups, community leaders, village governments, and other local stakeholders. More detailed information on participants can be found in Annex 1.

The main agenda of this activity was to deliver detailed information regarding the project planning to local communities, including the project objectives, expected outcomes, and planned activities to be implemented. This process aimed to ensure that local communities understood the project planning and were given sufficient time to reflect on their future needs and priorities.

During the activity, several key concerns and recommendations were expressed by the communities, including:

- The need for water sources to support agricultural activities
- The development of productive commodities that are suitable for local conditions
- Strengthening the capacity and institutional management of social forestry groups
- Support for business development and market access
- Support for the development of fishery groups and fish cultivation activities
- Support for fish cultivation business development
- The development of fish cultivation through floating net cages and biofloc systems





## 4. INCEPTION WORKSHOP RESULTS

### 4.1. Agenda and Summary

Table 4. Project Launching Agenda

Time	Agenda	Speakers
Session 1: Opening Session		
08:00 - 08:30	Registration	
08:30 – 10:00	Opening and Welcome Remarks	<ul style="list-style-type: none"> <li>• Muchlas Dharmawan Tualle, Leading Consortium Executing Entity</li> <li>• Hasbi Berliani, Kemitraan (Partnership for Governance Reform), National Implementing Entity</li> <li>• H. Andi Sudirman Sulaiman, Governor of South Sulawesi Province</li> <li>• Franky Zamzani, Director of Climate Change Adaptation, Ministry of Environment, National Designed Authority</li> </ul>
Session 2: Talk show and Discussion		
10:00 - 12:00	Government of Indonesia Policies and Strategic Steps in Encouraging Climate Change Adaptation	Franky Zamzani, Director of Climate Change Adaptation, Ministry of Environment, National Designed Authority
	Strategic Role in Encouraging Climate Change Adaptation Efforts in Indonesia	Hasbi Berliani, Kemitraan (Partnership for Governance Reform), National Implementing Entity

Time	Agenda	Speakers
	South Sulawesi Provincial Government's Policy in Encouraging Climate Change Adaptation of Lake Tempe	Irawan Dermayasamin Ibrahim, Head of the planning, research, and regional development agency of south sulawesi province
	Sustainable Lake Tempe Boundary Management Planning	Heriantono Waluyadi, Head of the River Region Hall Pompengan Jeneberang South Sulawesi
Session 3: Project Overview and Component		
13:00 - 15:30	Project Overview: <ul style="list-style-type: none"> <li>• Project Objective</li> <li>• Project Component               <ul style="list-style-type: none"> <li>- Expected Outcome</li> <li>- Output and Activites</li> </ul> </li> <li>• Disscussion on above</li> </ul>	Andi Gunawan Pratama, Project Manager of Executing Entity
Session 4: Closing Session		
15:30 – 16:00	Wrap up	Andi Gunawan Pratama, Project Manager of Executing Entity
	Closing Remarks	Muchlas Dharmawan Tualle, Leading Consortium Executing Entity

The Project Inception Workshop was conducted on 05 May 2026 in Makassar, South Sulawesi Province, Indonesia. The activity was attended by various stakeholders, including representatives from the Central Government, Provincial Government, District Governments, Village Governments, local communities, academics, NGOs, and media representatives. A total of 138 participants attended the workshop, consisting of 44 women and 94 men. Further details can be found in Annex 2.

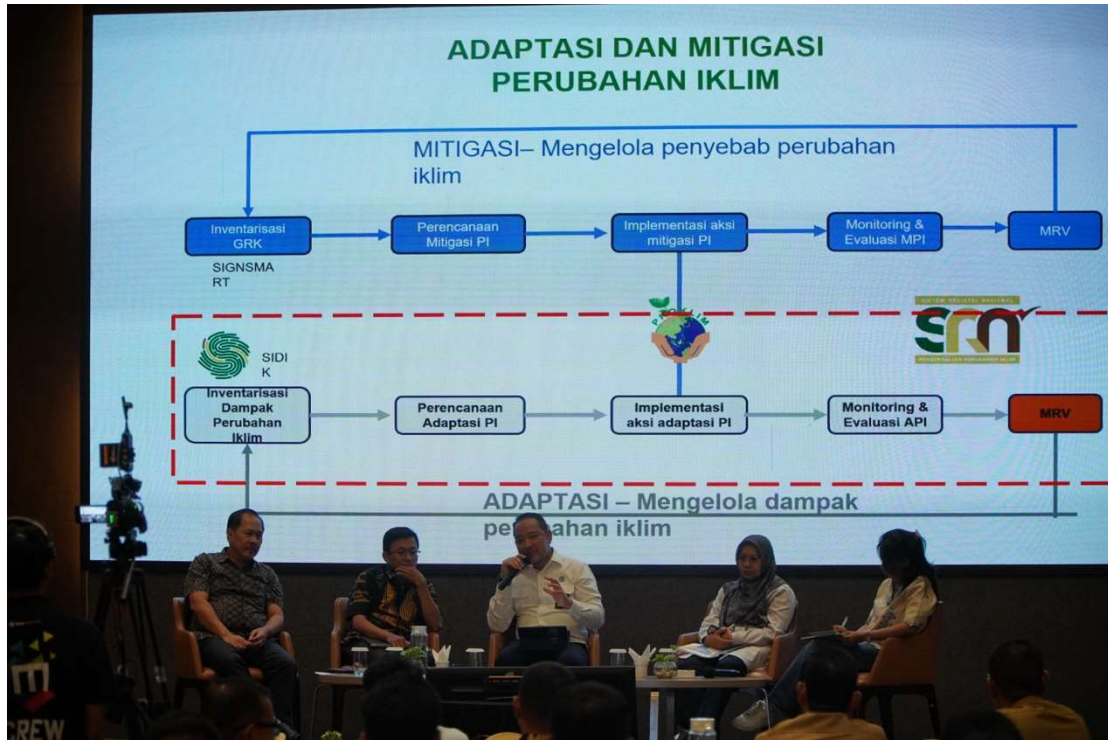
In the first session, the activity was officially opened by the Governor of South Sulawesi, represented by the Assistant II for Economy and Development, Andi Darmawan Bintang. Opening remarks were also delivered by Muchlas Dharmawan Tualle as Director of Tim Layanan Kehutanan Masyarakat (TLKM), Hasbi Berliani as Program Director of SGS Kemitraan (Partnership for Governance Reform), and the Director of Climate Change Adaptation from the Ministry of Environment.

The second session consisted of a talk show and discussion aimed at exploring policies, strategies, and the roles of relevant stakeholders related to the Tempe Lake ecosystem at the central, provincial, and local levels. The discussion also highlighted ongoing efforts and challenges in the Tempe Lake ecosystem, particularly related to climate adaptation, ecosystem restoration, sustainable landscape governance, disaster risk reduction, and community livelihoods. In addition, the session emphasized the importance of collaboration among stakeholders in strengthening adaptation efforts and ensuring the sustainability of the Tempe Lake ecosystem.

The third and final session presented an overview of the project, including its objectives, components, implementation scope, and planned interventions. The session also

discussed the overall direction of the project implementation and the expected outcomes for communities within the Tempe Lake ecosystem. The workshop concluded with a discussion session, where participants provided feedback, recommendations, and inputs related to the implementation of the project activities.







## 4.2. Participant's inputs, feedback and project response

Table 5. List of participant's feedback and project response

Feedback from participant's	Project response
Sedimentation reduction efforts should focus on reducing sedimentation rates in small rivers flowing into larger rivers, as smaller rivers contribute significantly to sedimentation.	The project will implement erosion and sedimentation reduction activities through vegetative approaches, particularly by conducting planting activities along riverbank areas.
The increase in degraded land in upstream areas is caused by the massive expansion of corn plantations, driven by the national food security program.	The project will implement planting activities using Multipurpose Tree Species (MPTs) as an effort to reduce the massive expansion of corn cultivation in upstream areas, while also improving local livelihoods through alternative income sources generated from MPTs.
The large number of suckermouth catfish ( <i>ikan sapu-sapu</i> ) in Tempe Lake has contributed to declining fish productivity, resulting in reduced fish catches for local fishers. If possible, the fish could be processed into products with economic value for communities around the lake, such as fish feed.	The utilization of suckermouth catfish as a commodity with economic value still requires further discussion, particularly with the Adaptation Fund. Previously, there was a plan to process the fish into economic products under the project; however, concerns were raised due to chemical contamination and pollution in the waters of Tempe Lake.
Tempe Lake involves multiple authorities and jurisdictions; therefore, a forum that brings together all relevant stakeholders is needed to support collaborative management of the Tempe Lake.	The project will facilitate the establishment of a working group as a multi-stakeholder platform to reduce the vulnerability of the Tempe Lake ecosystem.
In general, communities around Tempe Lake depend on capture fisheries; therefore, alternative livelihoods are needed to improve community income and economic resilience.	The project will support fish cultivation activities as an alternative livelihood approach, encouraging communities to gradually transition from capture fisheries to fish cultivation practices.
Dredging the lake should be carried out to increase water storage capacity and reduce flooding impacts on surrounding communities.	It would be difficult for the project to implement dredging activities due to the very high financial costs required.
Women, especially those heading households, should be included in community empowerment and capacity-building activities to enhance their income opportunities.	The project will actively involve women, and the project specifically includes approaches designed to strengthen women's participation and roles within the project activities.
Soppeng District should also be involved in the program to strengthen communication and	Soppeng District has not yet been formally included in the project implementation area;

Feedback from participant's	Project response
coordination in promoting collaborative management of Tempe Lake.	however, it will be involved in future coordination efforts, particularly in supporting collaborative policies for the management of Tempe Lake.

### 4.3. Outcome of Project Launching

The Project Launching marked the official commencement of the Adaptation Fund Project in South Sulawesi Province, Indonesia. The activity was attended by a wide range of stakeholders and was well represented at multiple levels, including the central government, provincial government, district governments, village governments, farmers, fishers, academics, NGOs, and media representatives. This reflects the high level of awareness and interest in the project among stakeholders.

One of the main outcomes of this activity was the shared understanding that the project implementation should be based on local needs while ensuring stakeholder representation and a more inclusive process. In addition, participatory approaches and efforts to improve environmental quality were emphasized as key pillars in implementing the project. The presence of various stakeholders also demonstrated how climate change adaptation efforts can be collaboratively implemented from the central, provincial, and district levels down to grassroots communities.

Participants provided various inputs and recommendations regarding the project, as presented in Table 5. Additional inputs and recommendations may continue to emerge throughout the project implementation process in response to evolving situations and needs. Overall, the project was positively welcomed and strongly supported by all stakeholders, and there were no significant concerns regarding the sustainability of the project.

## 5. COMMUNITY WORKSHOP RESULT

Following the project launching event, the Community Workshop was conducted using the Free, Prior, and Informed Consent (FPIC) process from 12–18 May 2026 in each intervention village. The activity was attended by 318 participants, consisting of 223 men and 95 women.

The main agenda of this activity was to jointly agree on activities that align with the needs of local communities. Considering the long period between the initial project proposal process and the project launching, adjustments were needed to ensure that the planned activities remained relevant to local conditions and community needs. The main output of this activity was the agreements reached with communities regarding the activities to be implemented under the project. Further details can be found in Annex 3.

The agreements jointly established during the community workshop included:

### **Forest Areas (Soppeng District)**

- The selection of plant species to be planted within social forestry areas requires further discussion
- Strengthening capacities in agricultural cultivation, particularly for durian cultivation
- Strengthening institutional capacity, particularly in group administration and management
- Women requested activities related to intercropping in forest areas using plants such as ginger, chili, and other local commodities.
- Conducting planting activities outside forest areas to improve environmental quality
- Business development efforts should prioritize candlenut and honey commodities
- Conducting participatory mapping of all land conditions within the villages
- Establishing joint business institutions or groups

### **Lake/Water Areas (Wajo District)**

- Fish cultivation activities will be carried out through floating net cages and biofloc systems
- Establishing work and monitoring systems for fish cultivation activities
- Development of fishery-based products such as shredded fish, dried fish, pempek, meatballs, fish oil, and other processed products
- Fish cultivation activities are planned to begin in July or August
- Establishing fish cultivation groups, strengthening group administration, conducting capacity-building activities, and providing fish cultivation materials
- Establishing fishery business groups, strengthening capacities, and providing production equipment

In general, the agreements established with communities are aligned with the overall project framework and adjusted to local conditions. However, several additional activities still need to be further adapted to local contexts, including: (1) fish cultivation activities using biofloc systems, and (2) planting activities outside social forestry areas. In addition, the high level of community participation in the workshop demonstrated strong support for the project and hopes for its long-term continuation. Further details regarding the agreements can be found in Annex 4.



## 6. CHANGES IN THE PROJECT DOCUMENT SINCE AF APPROVAL

Referring to the above process and series of activities during the inception phase, we plan to propose modification to Output Indicator 2.1.1. Not to change the substance of the indicator, but to adjust its description. The original indicator, “*Number of fisherman groups establishing, maintaining, managing smart float net cages,*” proposed to be modified into “*Number of fisherman groups establishing, maintaining, and managing fish cultivation activities.*”

This modification is based on inputs from local communities, as several villages recommended not implementing floating net cage systems and instead proposed other forms of fish cultivation activities that are more suitable to local conditions. Ujung Pero Village and Benteng Lompoe Village recommend to implement biofloc-based fish cultivation systems with the main consideration of monitoring floating net cages can be more challenging due to the long distance between the residential areas and the cage locations. Moreover, both villages are located in areas that are not prone to flooding.

Meanwhile, Laelo Subdistrict and Salomenraleng Subdistrict continue to prioritize fish cultivation through floating net cages, as this system is more adaptable when facing changes in water levels during floods compared to other cultivation methods.

Figure 3. Change in Project Document (Result Framework)

Project Results		Indicators		Baseline		Target		Risk and Assumption		Means of verification		Responsible	
Initial	Change	Initial	Change	Initial	Change	Initial	Change	Initial	Change	Initial	Change	Initial	Change
Output 2.1.1. Fisherman groups including women and vulnerable people have advanced knowledge in sustainable fish cultivation	N/A	Number of fisherman groups establishing, maintaining and managing <b>smart float net cages</b>	Number of fisherman groups establishing, maintaining and managing <b>fish cultivation</b>	0	N/A	4	N/A	Not everyone will be immediately accepting of new practices	N/A	<ul style="list-style-type: none"> <li>List of fisheries (fishery group decree of establishment)</li> <li>Supporting infrastructure procurement (<b>Float cage net</b>)</li> <li>Minute of Handover</li> <li>Expert reports</li> </ul>	<ul style="list-style-type: none"> <li>List of fisheries (fishery group decree of establishment)</li> <li>Supporting infrastructure procurement</li> <li>Minute of Handover</li> <li>Expert reports</li> </ul>	<ul style="list-style-type: none"> <li>Project Manager</li> <li>Aquaculture Livelihood technical Support</li> </ul>	N/A

## 7. CONCLUDING REMARKS

Through the inception process, which consisted of a series of activities at both the village and national levels, strong enthusiasm and support were demonstrated by communities, the central government, provincial government, district governments, village governments, and other stakeholders. This positive engagement reflects a shared commitment to strengthening climate adaptation efforts within the Tempe Lake ecosystem. Therefore, it is expected that the project will be implemented effectively and collaboratively, while generating sustainable benefits for local communities and other relevant stakeholders in the future. Few adjustments to the initial project proposal have been made based on the most recent conditions and agreements reached among stakeholders, particularly local communities. However, these changes have not significantly affected the overall project outcomes and objectives.

## ANNEXES

### Annex 1. Participants of Socialization in Village Level

Table 6. List of Participants Socialization

No	Name	Organisation
1	Abd. Rauf	KLP Tani
2	Ambo Tang	KTH PORO
3	Asrullah	KTH PORO
4	Agunisman	Ketua KTH Toriyamasei
5	Abubakar	Ketua KTH Matareng
6	Budiman	KTH Labarimeng
7	Arifuddin	LPHD Bulue
8	Anto Masse	
9	Arwin	
10	Suardi	
11	Herman	Anggota Kelompok Tani
12	Ismail	Anggota Kelompok Tani
13	Bahtiar	KTH Matareng
14	Ilham	Anggota Kelompok Tani
15	Hasse	
16	Dedi	
17	Firman	Anggota Kelompok Tani Hutan
18	Lia	Anggota Kelompok Tani Hutan
19	Mustamin	Anggota Kelompok Tani Hutan
20	Asriadi	Anggota Kelompok Tani Hutan
21	Asmulyadi	Wakil Ketua BPD
22	Abdul Rahman	Kepala Dusun Mario
23	Sahrullah	Staf BPD
24	Labedang	Kepala Dusun Mattirobulu
25	Wardah	Staf BPD
26	Asrullah	Staf BPD
27	Satriani	
28	Rismayanti	
29	Rusmini	Aparat Desa
30	Ebbi Azzahra	
31	Siti Aisyah Al-H	
32	Fatimah Azzahrah	
33	Nurmia	
34	Halida	
35	Supriadi	
36	Agustan	Aparat Desa
37	Hasbi Rasidi	Ketua BPD
38	Adil Wello	KPH Walanae
39	Mulawarman	KPH Walanae
40	Edy	Karantaruna
41	Ruslan	Staf Desa
42	Suhardin	Staf Desa

No	Name	Organisation
43	Jumardin	Kepala Dusun Tampaning
44	Darwis	Bhabinkamtibmas
45	Rusmina	LPHD Patampanua
46	Hania	
47	Gamriani	
48	Mildar Sukri	
49	Andis	
50	Landong	
51	Sri Nurul Hidayani	
52	Dwy Puji Lestari	LPHD Patampanua
53	Hasriadi	BPD
54	Ismail	
55	Masdihun	
56	Yusuf A	Sekertaris Desa
57	Hamriadi	Staf Desa
58	Adil Wello	KPH Walanae
59	Mulawarman	KPH Walanae
60	Amiruddin	Kepala Desa Patampanua
61	Ali Arbah	PMU AF
62	Agung Tomasina	PMU AF
63	Sy. Nurhasan	KTH Mattampawalie 2
64	Hasan	KTH Mattampawalie 1
65	Mustamin	Nelayan
66	Oddang	Nelayan
67	Eriyadi	Nelayan
68	Hj. Indo Tang	Perempuan
69	Hasti	Perempuan
70	Sarifuddin	Nelayan
71	Lawe	Nelayan
72	Sari	Nelayan
73	Muslimin	Nelayan
74	Alifsangkurniawan	Kepala Dusun
75	Amran Saputra	BPD
76	Tamin	Ketua RT
77	Lawe	Nelayan
78	Latang	Nelayan
79	Abintang	Nelayan
80	Mustamin	Nelayan
81	Oddang	Nelayan
82	Abd. Rahman	Petani
83	Sarjuddin	Petani
84	Eriyadi	Nelayan
85	Gunawan	Nelayan
86	Ambo Ayu	Nelayan
87	Syarifuddin	Ketua RT
88	Baba	Ketua RT

No	Name	Organisation
89	Mustakim	Kepala Dusun
90	Nur Yulis Astuti	Kelompok Perempuan
91	Delly Aspiani	Kelompok Perempuan
92	Baharuddin	Nelayan
93	Sumarni, S.Pd	Kelompok Perempuan
94	Maria Ulfa	Kelompok Perempuan
95	Jenni Rahman	Kelompok Perempuan
96	Hikma	Kelompok Perempuan
97	Kamaluddin	Sekretaris Desa
98	Syarifuddin	Nelayan
99	Herman	Kepala Desa
100	Muh. Yahya	Staff Desa
101	ST. Aliang	Kelompok Perempuan
102	Indo Lamming	Kelompok Perempuan
103	Hasti	Kelompok Perempuan
104	Hj. Indo Faang	Kelompok Perempuan
105	Elis Angriawan	Staff Desa
106	Arifin	Ketua RT
107	Muhammad Tang	Kepala Dusun
108	Indo Upe	Kelompok Perempuan
109	Hasnawati	Kelompok Perempuan
110	Nursana	Kelompok Perempuan
111	Muh. Yusri	Staff Desa
112	Mirna Fitria Damayanti	Kader Posyandu
113	Marnaeni	Kader Posyandu
114	Apriani	Kader Posyandu
115	Hastuti	Kelompok Perempuan
116	Suriani	Kelompok Perempuan
117	Lely	Kelompok Perempuan
118	Rosmanintan	Kelompok Perempuan
119	Jumarni	Kelompok Perempuan
120	Yudisanti	Kelompok Perempuan
121	Gustina	Kelompok Perempuan
122	Supriyadi	Nelayan
123	Amboy	Nelayan
124	Bahar	Nelayan
125	Ambo Ami	Nelayan
126	Sudarmami	Nelayan
127	Basri	Nelayan
128	Agus	Nelayan
129	Cerman	Nelayan
130	Muh. Ridwan	Nelayan
131	Feri	Nelayan
132	Sufardi	Nelayan
133	Fiati	Nelayan
134	Ambo Endre	Nelayan

No	Name	Organisation
135	Ambo Tang	Nelayan
136	Yusuf Bahtiar	Nelayan
137	Herudding	Nelayan
138	Saharil	Nelayan
139	Ahmad Ali Dewani	Nelayan
140	Muslimin	Nelayan
141	Sudarmin	Nelayan
142	Suardi P.	Nelayan
143	Amiruddin	Nelayan
144	Sukardi	Nelayan
145	Suriyadi	Nelayan
146	Wiranto	Nelayan
147	Muh. Yusuf	Nelayan
148	Suardi	Nelayan
149	Muslimin	Nelayan
150	Ahmad Amiruddin	Nelayan
151	Jumardiadi	Nelayan
152	H. Abidin	Kepala Desa
153	Murni	Kelompok Perempuan
154	Warda	Kelompok Perempuan
155	Anggeriani	Kelompok Perempuan
156	Mirawati	Kelompok Perempuan
157	Indo Masse	Kelompok Perempuan
158	Reski Anha	Kelompok Perempuan
159	Suriani	Kelompok Perempuan
160	Masni	Kelompok Perempuan
161	Tonreng	Nelayan
162	Edi Artia	Nelayan
163	H. Abdul Kadir M.	Staff Kelurahan
164	Muklis	Nelayan
165	Kuma	Nelayan
166	Abd. Gani	Nelayan
167	Arisman	Nelayan
168	Hastia	Nelayan
169	Heriyani	Nelayan
170	Hanna	Nelayan
171	Thamrin	Nelayan
172	H. Herman Jaya	Petani
173	Sudirman M.	Kepala Lingkungan
174	Ambo Asse	Nelayan
175	Yunus Ismail	Nelayan
176	Asrul	Petani
177	Diana	Petani
178	Sitti Sainab	Kelompok Perempuan
179	Sarina	Nelayan
180	Hajrah	Nelayan

No	Name	Organisation
181	Uchok	Nelayan
182	Lacong	Nelayan
183	Amiruddin	Nelayan
184	Supardi	Nelayan
185	H. Herman	Nelayan
186	Laranjang	Nelayan
187	Bustanil	Nelayan
188	Muh. Ridwan	Nelayan
189	Sukardi	Nelayan
190	Baharuddin	Nelayan
191	Hj. Mustati	Kelompok Perempuan
192	Subair	Nelayan
193	Hasnawi	Nelayan
194	Hj. Hasnah	Kelompok Perempuan
195	Norma	Kelompok Perempuan
196	Hasnawiah	Kelompok Perempuan
197	Nurhayati	Kelompok Perempuan
198	Hasna	Kelompok Perempuan
199	Fatmawati B.	Kelompok Perempuan
200	Tati	Kelompok Perempuan
201	Rusni	Kelompok Perempuan
202	Tawakel	Kelompok Perempuan
203	Nurma	Kelompok Perempuan
204	Hartati	Kelompok Perempuan
205	Keseming	Kelompok Perempuan
206	Tajang	Kelompok Perempuan
207	Indo Tang	Kelompok Perempuan
208	Murni S.	Kelompok Perempuan
209	Trie Mutiara Aprilia	Kelompok Perempuan
210	Darna	Kelompok Perempuan
211	Besse Nurfadillah	Kelompok Perempuan
212	Kartini Dwi Aprilia	Kelompok Perempuan
213	Darna	Kelompok Perempuan
214	Syarifuddin	Kepala Lingkungan
215	Sumardin	Tokoh Adat
216	Mulyadi	Staff Kelurahan
217	Taslim	Staff Kelurahan
218	Muh. Arifin	Nelayan
219	Basri	Sekretaris Kelurahan
220	Irfan	Staff Kelurahan
221	Abkar, S.Pd	Kepala Lingkungan

## Annex 2. Participants of Project Launching

Table 7. List of Participants Project Launching

No.	Name	Institutions
1	Ir. Selle KS Dalle	Vice Regent of Soppeng District
2	Franky Zamzani	Director of Climate Change Adaptation, Ministry of Environment
3	Yadi Suryadi	Ministry of Environment
4	Indah Sucasih	Ministry of Environment
5	Husnul Khatimah	Balai Besar Wilayah Sungai Pompengan Jeneberang
6	Icha LD	Balai Besar Wilayah Sungai Pompengan Jeneberang
7	Achsan	Balai Besar Wilayah Sungai Pompengan Jeneberang
8	Yusma Elfira	Balai Besar Wilayah Sungai Pompengan Jeneberang
9	Ahadri	Balai Besar Wilayah Sungai Pompengan Jeneberang
10	Fajar Arif	Balai Besar Wilayah Sungai Pompengan Jeneberang
11	Sulfiana	Balai Besar Wilayah Sungai Pompengan Jeneberang
12	Eko Sapriyanto	Environmental control center Sulawesi dan Maluku
13	A. Asnidar	Environmental control center Sulawesi dan Maluku
14	Lukas Tangalobo	Social Forestry Office Gowa
15	Sarifuddin	Social Forestry Office Gowa
16	Abdi Sedadi	Social Forestry Office Gowa
17	Nurul Huda Y	Social Forestry Office Gowa
18	Abuan Hermawan	Watershed Management Office Jeneberang Saddang
19	Bahar	Watershed Management Office Jeneberang Saddang
20	Salmiyah	Bappelitbangda Prov. SulSel
21	Agussalim	Bappelitbangda Prov. SulSel
22	A. Dipa Rahayu	Bappelitbangda Prov. SulSel
23	Amri Islamuddin	Bappelitbangda Prov. SulSel
24	Nurwahidah	Bappelitbangda Prov. SulSel
25	Debia Arida	Bappelitbangda Prov. SulSel
26	A Ryanti Sayadi	Bappelitbangda Prov. SulSel
27	M. Rizal	Bappelitbangda Prov. SulSel
28	Ariany Rufaidah	Bappelitbangda Prov. SulSel
29	Sri Agustati	Bappelitbangda Prov. SulSel
30	Burhanuddin	Bappelitbangda Prov. SulSel
31	Rosmala Dewi	Bappelitbangda Prov. SulSel
32	M. Ibnu Az	Bappelitbangda Prov. SulSel
33	Kiad Imrunsil	Bappelitbangda Prov. SulSel
34	Zkiyah Safrinah	Bappelitbangda Prov. SulSel
35	Inriani	Bappelitbangda Prov. SulSel
36	Suaddi Syamsir	Bappelitbangda Prov. SulSel
37	Taufiq Anshari	Bappelitbangda Prov. SulSel
38	R. Yudha Prawara	Bappelitbangda Prov. SulSel
39	Dian RZ	Bappelitbangda Prov. SulSel
40	Firman	Bappelitbangda Prov. SulSel
41	A. Astuty	Bappelitbangda Prov. SulSel

No.	Name	Institutions
42	M. Fakhrusy	Bappelitbangda Prov. SulSel
43	Fatma Sudarmi	Dinas KP Prov. SulSel
44	Dr. Sitti Masniah	Dinas KP Prov. SulSel
45	Rosdiana	Dinas Koperasi Prov. SulSel
46	Nuryani Nasir	Dinas Koperasi Prov. SulSel
47	Rajiah	Dinas LHK Prov. SulSel
48	Taufiq	Dinas Perindustrian dan Perdagangan Prov Sulsel
49	Subhan Kisla	Dinas Perindustrian dan Perdagangan Prov Sulsel
50	Asnani Mappa	Dinas PMD prov. SulSel
51	Muh. Arham	Dinas PMD Prov. SulSel
52	A. Mirza A	Dinas SDA CK TR Prov. SulSel
53	A. Yurnita	Dinas SDA CK TR Prov. SulSel
54	Yati Makkatutu	Protokoler Prov. SulSel
55	Adil Wello	UPTD KPH Walanae
56	Mulawarman	UPTD KPH Walanae
57	Marhumah	DPLH SulSel
58	Mahfuddin	Bapperida Kab. Wajo
59	M. Ilyas	Bapperida Kab. Wajo
60	Solihin	BPBD Kab. Wajo
61	Muhammad Rafi	BPBD Kab. Wajo
62	A. Hasanuddin	BPBD Kab. Wajo
63	A. Fakhru Rijal	Dinas LH Kab. Wajo
64	Ambo Asse	Dinas LH Kab. Wajo
65	Ansar maulana	Dinas LH Kab. Wajo
66	A. Muh. Subhan. A	Dinas Perdagangan, Perindustrian, Koperasi, dan Usaha Kecil Menengah Kab. Wajo
67	Andi Cakunu	Dinas Perikanan Kab. Wajo
68	Panca	Dinas Perikanan Kab. Wajo
69	Asbar	Dinas Perikanan Kab. Wajo
70	A. Sudarmin	Dinas PMD Kab. Wajo
71	Saiful	Dinas PMD Kab. Wajo
72	Nur Inayah	Bappelitbangda Kab. Soppeng
73	A. Zulkifli	Bappelitbangda Kab. Soppeng
74	A. Massalengka	Dinas LH Kab. Soppeng
75	A. Wardy	Dinas Perdagangan, Perindustrian, Koperasi, dan Usaha Kecil Menengah Kab. Soppeng
76	A. Agussalim	Dinas Perdagangan, Perindustrian, Koperasi, dan Usaha Kecil Menengah Kab. Soppeng
77	Abdul Chair	Dinas PMD Kab. Soppeng
78	Basir	Pemerintah Kelurahan Salomenraleng
79	Herman	Pemerintah Desa Benteng Lompoe
80	Andi Darwin	Pemerintah Kelurahan Laelo
81	H. Abidin	Pemerintah Desa Ujung Pero
82	Muh. Arifin	Perwakilan nelayan Kel. Salomenraleng
83	Ambo Asse	Perwakilan nelayan Kel. Laelo

No.	Name	Institutions
84	Lababa	Perwakilan nelayan Desa Benteng Iompoe
85	Jumardi	Perwakilan nelayan Desa Ujung Pero
86	Amiruddin	Pemerintah Desa Patampanua
87	Abdul Majid	Pemerintah Desa Bulue
88	Abubakar	HKM Matareng Bulue
89	Hasan	KTH Mattampawalie
90	Irawan	Forum DAS
91	Usman Arsyad	Forum DAS
92	Muh. Farhan Syawal	Universitas Hasanuddin
93	Asjulia	Fakultas Pertanian Universitas Islam Makassar
94	Muh. Ichwan K	Fakultas Pertanian Universitas Islam Makassar
95	Hikmah	Universitas Muhammadiyah Makassar
96	Andi Khairil A. Samsu	Universitas Muslim Maros
97	Muh Faisal M	Universitas Muslim Maros
98	Arwan	Peneliti
99	Ary	SINDO Makassar
100	Maruf Nurhalis	Sulawesi Cipta Forum (SCF)
101	Asdar M	Pupuk
102	Mushadaiq	YRC Indonesia
103	Muh. Rafly	YRC Indonesia
104	Firdaus	YRC Indonesia
105	Aldy Rizaldi A	YRC Indonesia
106	Andi Putri R.M	Moderator/TLKM
107	Dedy M	TLKM
108	Riskayanti	TLKM
109	Basri Andang	Wallcea
110	Muh. Syahir	PPM
111	Paisrul	HIPMI
112	Muh. Nur Rahmat	Blue Forest
113	Sahlah	Nypah Indonesia
114	M. Rizki	Lemsa
115	Syamsuddin Awing	Pinus SulSel
116	Didiek Eko Y	Kemitraan
117	A. Khalid M	BKW
118	Ahmad Sabri	IGI
119	Nurul Afifah	PMU TLKM
120	Sri Rahmatiah	PMU Yari
121	Agung Tomasina	PMU TLKM
122	Andy Kurniawan	PMU TLKM
123	Ali Arba	PMU Yari
124	Nurul Sakinah	PMU TLKM
125	Nur Muts Mak Inna	PMU TLKM
126	Eunike Pande	PMU TLKM

No.	Name	Institutions
127	Rizki Amalia	PMU TLKM
128	Arung E. Hasman	PMU TLKM
129	Pettarani	PMU TLKM
130	Andi Gunawan P	PMU TLKM
131	Faisal Al Amin	PMU TLKM
132	Sri Wahyuni M	PMU TLKM
133	Faiz Mutahhar	PMU BKW
134	Saparuddin	PMU TLKM
135	Reski	PMU TLKM
136	Wahyu Wardani	PMU IGI
137	A. Atira Ilfa	PMU TLKM
138	Muchlas Dharmawan Tualle	PMU TLKM



Microsoft Word  
Document

### Annex 3. Participants of FPIC

Table 8. List of Participants FPIC

No	Name	Organisations
1	Abu Bakar	Ketua KTH Matareng
2	H. Hasse	KTH Matareng
3	Sudirman	KTH Matareng
4	Rasi	KTH Matareng
5	Muliadi	KTH Matareng
6	Arwin	KTH Matareng
7	Alimuddin	KTH Matareng
8	Bahtiar	KTH Matareng
9	Jumartang	KTH Matareng
10	Sirajuddin	KTH Matareng
11	Agustang	KTH Matareng
12	Rain	KTH Matareng
13	Edi	KTH Matareng
14	Masse	KTH Matareng
15	Nurdin	KTH Matareng
16	Hendra	KTH Matareng
17	Fandy	KTH Matareng
18	Amirsyani	KTH Matareng
19	Salni	KTH Matareng
20	Jumati	KTH Matareng
21	Lamae	KTH Matareng
22	Arossi	KTH Matareng
23	Sumese	KTH Matareng
24	Lapontong	KTH Matareng
25	Ladonong	KTH Matareng
26	Lasodding	KTH Matareng
27	Sinanleng	KTH Matareng
28	Salama	KTH Matareng
29	Isudi	KTH Matareng
30	Jumase	KTH Matareng
31	La Tato	KTH Matareng
32	La Sewa	KTH Matareng
33	Ibrahim	KTH Matareng
34	Muksin	KTH Matareng
35	Baharuddin	KTH Matareng
36	Suhardi	KTH Matareng
37	Ahmad Saidi	KTH Matareng
38	Lanugu	KTH Matareng
39	Labedoy	KTH Matareng
40	Kamal	KTH Matareng
41	Sukardi	KTH Matareng
42	Muhammd	KTH Matareng
43	Lahinding	KTH Matareng

No	Name	Organisations
44	Lakasse	KTH Matareng
45	Muliadi	KTH Matareng
46	Lanimang	KTH Matareng
47	Rustang	KTH Matareng
48	Kamaluddin	KTH Matareng
49	Umar	KTH Matareng
50	Sudirma S	KTH Matareng
51	Dedi	KTH Matareng
52	Faisal	KTH Matareng
53	Irinni	KTH Matareng
54	Suwardi	KTH Matareng
55	Dirman	KTH Matareng
56	Sinuddin	KTH Matareng
57	Nurhayati	KTH Matareng
58	Sunarti	KTH Matareng
59	Emmang	KTH Matareng
60	Hasanuddin	KTH Matareng
61	Juhaidis	KTH Matareng
62	Suha	KTH Matareng
63	Wandi	KTH Matareng
64	Mayan Sari	KTH Matareng
65	Ida	KTH Matareng
66	Nur Alia	KTH Matareng
67	Agunisman	KTH Toriyamasei
68	Alwi	KTH Toriyamasei
69	Salehe	KTH Labarimaeng
70	Ismail	KTH Labarimaeng
71	Salehe	KTH Toriyamasei
72	Darwis	KTH Toriyamasei
73	Ilham	KTH Toriyamasei
74	Basri	KTH Toriyamasei
75	Lande	KTH Toriyamasei
76	Lahali	KTH Toriyamasei
77	Ahmadi	KTH Toriyamasei
78	Budiman	KTH Labarimaeng
79	A. Samsu alang	Staf KPH Walanae
80	Lamin	KTH Labarimaeng
81	ABD. Rauf	KTH Toriyamasei
82	Amar	KTH Toriyamasei
83	Nur alim	KTH Toriyamasei
84	Modding	KTH Labarimaeng
85	Ardi	KTH Toriyamasei
86	Syarifuddin	KTH Toriyamasei
87	Jamaluddin	KTH Toriyamasei
88	Lamatong	KTH Toriyamasei
89	ABD. Rahim	KTH Toriyamasei

No	Name	Organisations
90	Sago	KTH Toriyamasei
91	Salimuddin	KTH Toriyamasei
92	Muh Ali	KTH Toriyamasei
93	Yusuf	KTH Labarimaeng
94	Asis	KTH Labarimaeng
95	Jumaldi	KTH Labarimaeng
96	Nasrul	KTH Toriyamasei
97	Masnur	KTH Toriyamasei
98	Yunus	KTH Toriyamasei
99	Sukian	KTH Toriyamasei
100	ABD Samad	KTH Toriyamasei
101	Salama	KTH Toriyamasei
102	Sulhedar	KTH Toriyamasei
103	Edi Gustiawan	KTH Toriyamasei
104	Dandi	KTH Toriyamasei
105	Rahman	KTH Toriyamasei
106	Ancu	KTH Toriyamasei
107	Ridwan	KTH Labarimaeng
108	Darwis	KTH Toriyamasei
109	Mursalin M	KTH Toriyamasei
110	Herman	KTH Toriyamasei
111	Mulyani	KTH Toriyamasei
112	Rohani	KTH Toriyamasei
113	Amir	LPHD Bulue
114	Agusri	KTH Poro
115	Jumardin	KTH Poro
116	Yusuf	KTH Poro
117	Anto	KTH Poro
118	Sudarman	KTH Poro
119	Acan	KTH Poro
120	Ishak	KTH Poro
121	Muntaha	KTH Poro
122	A. Fuji Hariyani	KTH Poro
123	Hasriadi	KTH Poro
124	Londing	KTH Poro
125	Hasse	Coppo Congki / LPHD Bulue
126	La Sinase	KTH Poro
127	Mustari	KTH Poro
128	Jumasse	KTH Poro
129	Muh. Natsir	KTH Poro
130	Juhansa	KTH Poro
131	Daga	KTH Poro
132	Muzakkir	KTH Poro
133	Yunus	KTH Poro
134	Mustamin	KTH Poro
135	Syamsu Alam	KTH Poro

No	Name	Organisations
136	Andi	LPHD Bulue
137	Dising	KTH Poro
138	Saharuddin	LPHD Bulue
139	Ari	KTH Poro
140	Yusuf J	LPHD Bulue
141	Ambotang	KTH Poro
142	Nurmi	KTH Poro
143	St. Nur Alam	KTH Poro
144	Afrianto	Coppo Congki / LPHD Bulue
145	Dahlan	KTH Poro
146	Suardi	KTH Poro
147	Andi Tenri Olle	Warga
148	Hasan	KTH Matampawalie 1
149	Mustamin	KTH Matampawalie 1
150	Syamsiar	KTH Matampawalie 2
151	Sunardi	KTH Matampawalie 2
152	Nurmah	KTH Matampawalie 2
153	Mulyadi	KTH Matampawalie 1
154	Agusman	KTH Matampawalie 1
155	Kamaruddin	KTH Matampawalie 1
156	Nurdin	KTH Matampawalie 1
157	Syarifuddin	KTH Matampawalie 1
158	Endu	KTH Matampawalie 2
159	Mappawellangi	KTH Matampawalie 1
160	Jumadi	KTH Matampawalie 2
161	Sudirman	KTH Matampawalie 1
162	Masdihe	KTH Matampawalie 1
163	Mustamin	KTH Matampawalie 2
164	Sukri	KTH Matampawalie 2
165	Taufiq Laitti	KTH Matampawalie 2
166	Musdalifah	KTH Matampawalie 1
167	Edy Canja	KTH Matampawalie 2
168	H Enre	KTH Matampawalie 2
169	Landong	KTH Matampawalie 1
170	Sy. Nurhasan	KTH Matampawaie 2
171	Wandy Asrullah	KTH Matampawalie 1
172	Herman	Matampawalie 2
173	Amiruddin	Kepala Desa
174	Gamriani	KTH Matampawalie 2
175	Hania	KTH Matampawalie 2
176	Harwina	KTH Matampawalie 2
177	Nurwah	KTH Matampawalie 2
178	Baharia	KTH Matampawalie2
179	Mardiana	KTH Matampawalie 2
180	Nurwana	KTH Matampawalie 2
181	Suriana	Staf Desa Patampanua

No	Name	Organisations
182	Nafa Yasida Putri	Staf Desa Patampanua
183	Ernawati	Staf Desa Patampanua
184	Rusmina	LPHD
185	Hasriadi	Alompang 1
186	Hasriani	Alompang 2
187	Hj. Mennan	Alompang 1
188	Hariyadi	LPHD
189	Muslihan	LPHD
190	Lasse	Alompang 2
191	Landong	Alompang 1
192	Hasan	LPHD
193	Side	Alompang 1
194	Andis	Alompang 1
195	Hj. Rukmini	Alompang 2
196	H. Abd Rahman	Alompang 1
197	Muh. Ishak	Kodim
198	Darwis	Polres Soppeng
199	Amiruddin	Kades
200	Sirajuddin	Nelayan
201	Sali	Nelayan
202	Kaddas	Nelayan
203	Laoengge	Nelayan
204	Lababa	Nelayan
205	Syarifuddin	Nelayan
206	H. Herman	Nelayan
207	Sukardin	Nelayan
208	Alifsangkurniawan	Kepala Dusun
209	Amran Saputra	Anggota BPD
210	Suardi	Nelayan
211	Syahrudin	Nelayan
212	Risma	Kelompok Perempuan
213	Mare Intan	Kelompok Perempuan
214	Hasni	Kelompok Perempuan
215	Asse	Kelompok Perempuan
216	Hj. Rahmatang	Kelompok Perempuan
217	Nurhaeda	Kelompok Perempuan
218	Hj. Asni	Kelompok Perempuan
219	Hasti	Kelompok Perempuan
220	Indo Lamming	Kelompok Perempuan
221	Jenni Rahman	Kelompok Perempuan
222	Sitti Asiith	Kelompok Perempuan
223	Nurjasa	Kelompok Perempuan
224	Hj. Sindara	Kelompok Perempuan
225	Jumriana	Kelompok Perempuan
226	Kanda	Nelayan
227	Lati	Nelayan

No	Name	Organisations
228	Kamaluddin	Sekretaris Desa
229	H. Abidin	Kepala Desa
230	Mursaha	Nelayan
231	Muslimin	Ketua BPD
232	Suardi P.	Nelayan
233	Elis Angriawan	Kelompok Pemuda
234	Muh. Yusri	Staff Desa
235	Akong	Nelayan
236	Jumardiadi	Nelayan
237	Sukardi	Nelayan
238	Riska Abidin	Kelompok Perempuan
239	Bandung	Nelayan
240	Adam	Nelayan
241	Wawan	Kelompok Pemuda
242	Arifuddin	Nelayan
243	Muh. Nur	Nelayan
244	Muh. Tang	Nelayan
245	Rahmat	Kelompok Pemuda
246	Alfian	Kelompok Pemuda
247	Agus	Kelompok Pemuda
248	Ahmad Amiruddin	Nelayan
249	Dg. Mallongi	Nelayan
250	Suardi	Nelayan
251	Tokeng	Nelayan
252	Irma	Kelompok Perempuan
253	Marissa Arsyad	Kelompok Perempuan
254	Gusti Wardani	
255	Armawani	
256	Heriyani	
257	Nurul Inayati	
258	Nanna	Kelompok Perempuan
259	Hardiana	Kelompok Perempuan
260	Erni	Kelompok Perempuan
261	Vasse	Kelompok Perempuan
262	Takkawang	Kelompok Perempuan
263	Ituwo	Kelompok Perempuan
264	Hasnawati	Kelompok Perempuan
265	Heriyani	Kelompok Perempuan
266	St. Saenab	Kelompok Perempuan
267	Hj. Subaeda	Kelompok Perempuan
268	Muh. Dirga	Kelompok Pemuda
269	Thamrin	Nelayan
270	Nur Asrini Ramadhani	Kelompok Pemuda
271	Hastia	Kelompok Perempuan
272	Hajrah	Kelompok Perempuan
273	Fitriani	Kelompok Perempuan

No	Name	Organisations
274	Muh. Farel	Kelompok Pemuda
275	H. Herman Jaya	Nelayan
276	Andre Prasetio P.	Kelompok Pemuda
277	Risal	Kelompok Pemuda
278	Muh. Ali Samad	Nelayan
279	Mursalim	Nelayan
280	Sudirman	Nelayan
281	Abdul Malik G.	Staff Kelurahan
282	Agunisman	Nelayan
283	Arisman	Nelayan
284	Ambo Masse	Nelayan
285	Muh. Yusran	Nelayan
286	Ambo Asse	Nelayan
287	Remmang	Nelayan
288	Basri	Sekretaris Lurah
289	Rosnani, S.E	Staff Kelurahan
290	Irfan	Staff Kelurahan
291	Sumardin	Tokoh Adat
292	Abkar	Kepala Lingkungan
293	Kasaming	Kelompok Perempuan
294	Marwati	Kelompok Perempuan
295	Sirajuddin	Nelayan
296	Baharuddin	Nelayan
297	Hasnah	Kelompok Perempuan
298	Fatmawati	Kelompok Perempuan
299	Hasnan	Kelompok Perempuan
300	Nurhayati	Kelompok Perempuan
301	Juheria	Kelompok Perempuan
302	Fatmawati B.	Kelompok Perempuan
303	Hartati	Kelompok Perempuan
304	Hasnawiah	Kelompok Perempuan
305	Muh. Arifin	Nelayan
306	H. Herman	Nelayan
307	Subair	Nelayan
308	Darwis	Nelayan
309	Supardi	Nelayan
310	Surianto	Nelayan
311	Makka	Nelayan
312	Syarifuddin	Nelayan
313	Murni S.	Kelompok Perempuan
314	Kartini	Kelompok Perempuan
315	Mulyadi	Petani
316	Taslim	Petani
317	Ambo Upe	Petani
318	Panca B.	Dinas Perikanan Wajo

Annex 4. Minutes of Agreement



**Microsoft Word  
Document**